



Industrial PC

Android 6.0 OS on iMX6Q User Manual

For iMX6Q Products

Content can change at anytime, check our website for latest information of this product.

www.chipsee.com

Contents

| | |
|--|----|
| Android 6.0 OS | 4 |
| 1. Preparation | 6 |
| 1.1. Hardware Requirements | 6 |
| 1.2. Software Requirements | 6 |
| 2. Getting Started and Tests | 7 |
| 2.1. Boot Switch Configuration | 7 |
| 2.2. Prepare Manufacturing Tool and Image | 7 |
| 2.3. Downloading Images | 8 |
| 2.3.1. Downloading Images by using MFGTool | 8 |
| 2.3.1.1. Configuring MFGTool | 8 |
| 2.3.1.2. Copy Image To Android Directory | 9 |
| 2.3.1.3. Using MFGTool | 9 |
| 2.3.2. Downloading Images by using the TF card | 13 |
| 2.4. Booting Android OS And Test(Using 7inch as example) | 15 |
| 2.4.1. SD Test | 16 |
| 2.4.2. USB Flash Disk Test | 17 |
| 2.4.3. Network Test | 18 |
| 2.4.4. Sound Card Test | 19 |
| 2.4.5. Video Test | 20 |
| 2.4.6. HDMI Test | 21 |
| 2.4.7. WIFI Test | 21 |
| 2.4.8. ADB Test | 22 |
| 2.4.9. Touch Screen Test | 26 |
| 2.4.10. Serial Test | 27 |
| 2.4.11. GPIO | 30 |
| 2.4.11.1. Modify Logo | 31 |
| 3. Android 6.0 system debug in Windows | 34 |
| 3.1. View Android 6.0 system via the serial port | 34 |
| 3.2. Adb connect via USB OTG | 36 |
| 3.2.1. Use ADB command to install user APP | 37 |

| | |
|---|----|
| 3.2.2. Use ADB command to uninstall user APP | 38 |
| 3.2.3. Use ADB command to uninstall default APP | 39 |
| 3.2.4. Use ADB command to uninstall default APP | 40 |
| 3.3. Adb connect via internet | 41 |
| 4. Android App Development | 43 |
| 4.1. Example — Develop a HelloWorld Program | 43 |
| 5. Disclaimer | 48 |
| 6. Technical Support | 48 |

Android 6.0 OS

Android 6.0 OS User Manual



This manual is used to provide users with a fast guide of Chipsee Industrial Computers (Abbreviated as IPC) about Android 6.0 OS development. Through this manual, users can quickly understand the hardware resources; users can build a complete compilation of Android development environment; users can debug Android 6.0 OS via serial, USB OTG and Internet.

| Revision | Date | Author | Description |
|----------|------------|--------|-----------------|
| V1.0 | 2021-12-30 | Randy | Initial Version |

SUPPORTED BOARDS:

*CS10600F070 CS10768F097 CS12800F101 CS10768F121 CS10768F121-U CS10768F150
CS12102F170 CS14900F190 CS19108F215*

PREBUILT FILES PACKAGE:

Prebuilt files for the various industrial PCs can be found in the [OS Downloads](#). Below are the links to the prebuilt files for each industrial PC model.

- [CS10600F070](#)
- [CS10768F097](#)
- [CS12800F101](#)
- [CS10768F121](#)
- [CS10768F121-U](#)
- [CS10768F150](#)

- [CS12102F170](#)
- [CS14900F190](#)
- [CS19108F215](#)

System Features

| Feature | Comment |
|---------|-------------|
| System | Android 6.0 |

Preparation

You will need to prepare the following items before you can start using the Prebuilt Files Package to re-flash the system.

Power Supply Unit (PSU) with the appropriate voltages, as follows:

- These products: CS10768F121, CS10768F121-U, CS10768F150, CS12102F170, CS14900F190, and CS19108F215 requires a 15V to 36V power adapter.
- These products: CS10768F097 and CS12800F101 product needs a 12V to 36V power adapter.
- The CS10600F070 product needs a 6V to 36V power adapter.

Hardware Requirements

- Chipsee Industrial PC
- PSU according to the instructions above
- USB-to-serial or other serial cable for debugging
- USB A-A cable (used only if the hardware configured as OTG)
- Windows 7 PC
- TF Card (at least 4GB) and card reader

Software Requirements

- Android 6.0 OS Prebuilt Files Package (from the link above)
- **Android Studio 2.3.3 for Windows**
- Android USB driver (for Windows)
- MFGTools_Kernel3.14.52

Getting Started and Tests

Note

Throughout this section, the user can use both the pre-built Android 6.0 image files and the **MFGTools** software to burn files to the system, boot system and perform necessary software and hardware test.

Boot Switch Configuration

CS-IMX6 has a boot configuration select switch, as shown on the figure below. You can use the boot select switch to change between three modes, namely

- TF Card
- eMMC Boot
- Download

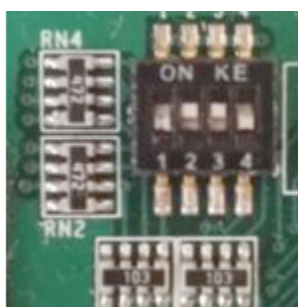


Figure 173: Boot Mode Setup

| SW Mode | 1 | 2 | 3 | 4 |
|----------|---|---|---|---|
| TF Card | 1 | 0 | 0 | 0 |
| eMMC | 1 | 1 | 0 | 1 |
| Download | 0 | 1 | 1 | 0 |

Table 44 Boot Configuration Selection

Prepare Manufacturing Tool and Image

The manufacturing tool, referred to as **MFGTools**, is a tool that runs on a Windows PC. You can use it to download pre-built images to the eMMC on a Chipsee board. The tools directory contains the `tar.gz` file.

| MFGTool | Windows download tool |
|--------------|----------------------------------|
| Kernel Image | emmc-flash/emmc/boot-imx6q.img |
| U-boot Image | emmc-flash/emmc/u-boot-imx6q.imx |

| MFGTool | Windows download tool |
|----------------------|------------------------------------|
| Recovery Image | emmc-flash/emmc/recovery-imx6q.img |
| Android File System | emmc-flash/emmc/system.img |
| Android Logo | emmc-flash/emmc/xxx.bmp |
| Industrial Computer | One |
| USB OTG Cable | One |
| 12V-2A power adapter | One |

Downloading Images

Chipsee IPC supports booting from an integrated eMMC or an external TF Card (also known as the micro SD card). Booting from the external TF Card allows flashing the system OS.

Downloading Images by using MFGTool

Chipsee IPC supports booting from an integrated eMMC.

CONFIGURING MFGTOOL

To configure MFGTool, follow these steps:

- Unzip `Mfgtools_Kernel3.14.52_V1.0.rar` file.
- Open the extracted folder `Mfgtools_Kernel3.14.52_V1.0` and edit `cfg.ini` file.



| 名称 | 修改日期 | 类型 | 大小 |
|----------------|------------------|--------|----------|
| Drivers | 2016/9/18 17:18 | 文件夹 | |
| Profiles | 2016/9/18 17:18 | 文件夹 | |
| cfg.ini | 2016/10/26 16:27 | 配置设置 | 1 KB |
| MfgTool.log | 2016/10/27 14:19 | 文本文档 | 30 KB |
| MfgTool2.exe | 2015/10/26 12:42 | 应用程序 | 1,950 KB |
| MfgToolLib.dll | 2015/10/26 12:42 | 应用程序扩展 | 2,190 KB |
| UICfg.ini | 2015/10/26 12:42 | 配置设置 | 1 KB |

Figure 174: Extracted folder content

- In the `cfg.ini` file, ensure the `name` variable is set to `eMMC-Android`, as shown on the figure below.

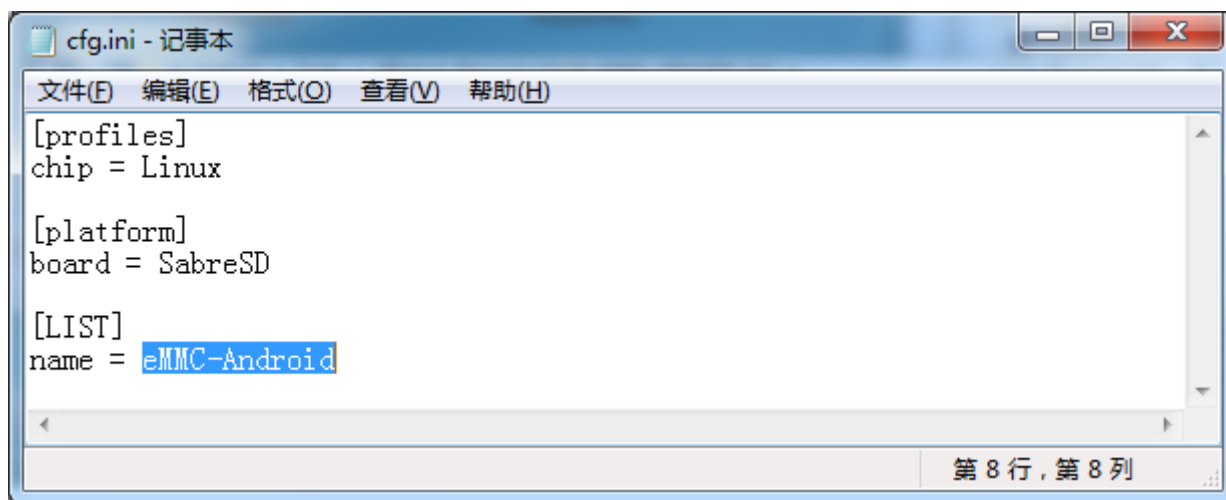


Figure 175: Cfg.ini file

COPY IMAGE TO ANDROID DIRECTORY

Follow these steps to copy image to Android directory:

- Unzip `prebuilt-imxv1-csXXXXXfXXXvX-android6-emmc-YYYYMMDD.tar.gz` file. The extracted folder will contain these files: `boot-imx6q.img`, `recovery-imx6q.img`, `system.img`, and `u-boot-imx6q.imx`. The logo file, `android6_xxx.bmp`, is located in the `emmc-flash/emmc` directory.
- Copy the files listed above from the extracted folder to `Mfgtools_Kernel3.14.52_V1.0\Profiles\Linux\OS Firmware\files\android` directory.

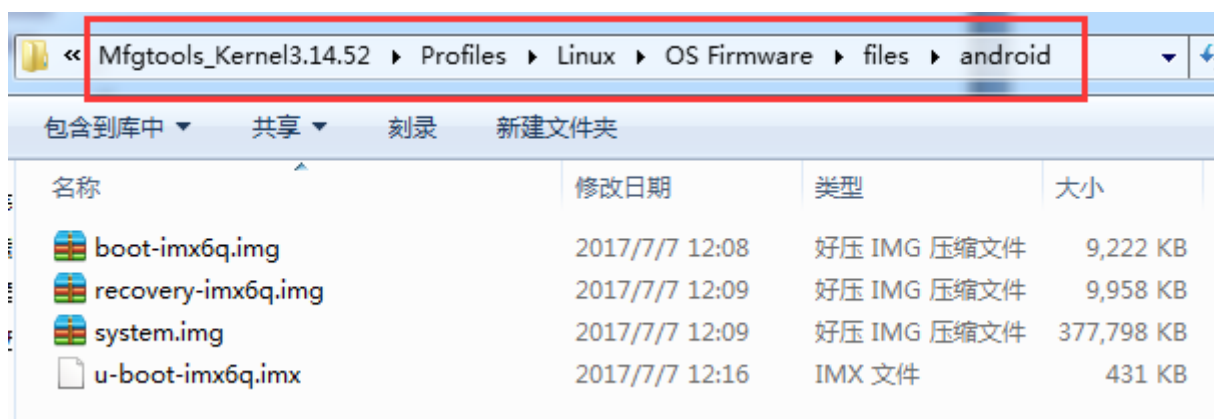


Figure 176: Extracted folder with files

USING MFGTOOL

1. Connect a USB OTG cable from a Windows PC to the USB OTG port on the IPC.
2. **Change the boot select configuration to 0 1 1 0, as shown on the figure below.**

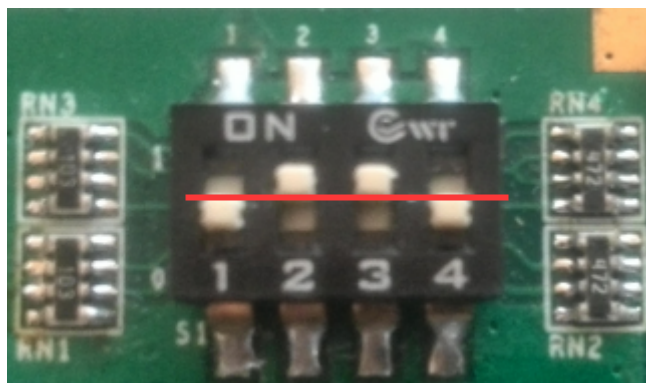


Figure 177: Boot Switch Config

3. Connect a 12V-2A power adapter to the IPC and power ON.
4. **On your Windows PC, open the `Mfgtools-Rel-XXX_XXXXXX_MX6Q_UPDATER_VXX` directory and run the `MfgTool2.exe` file, as shown on the figure below.**

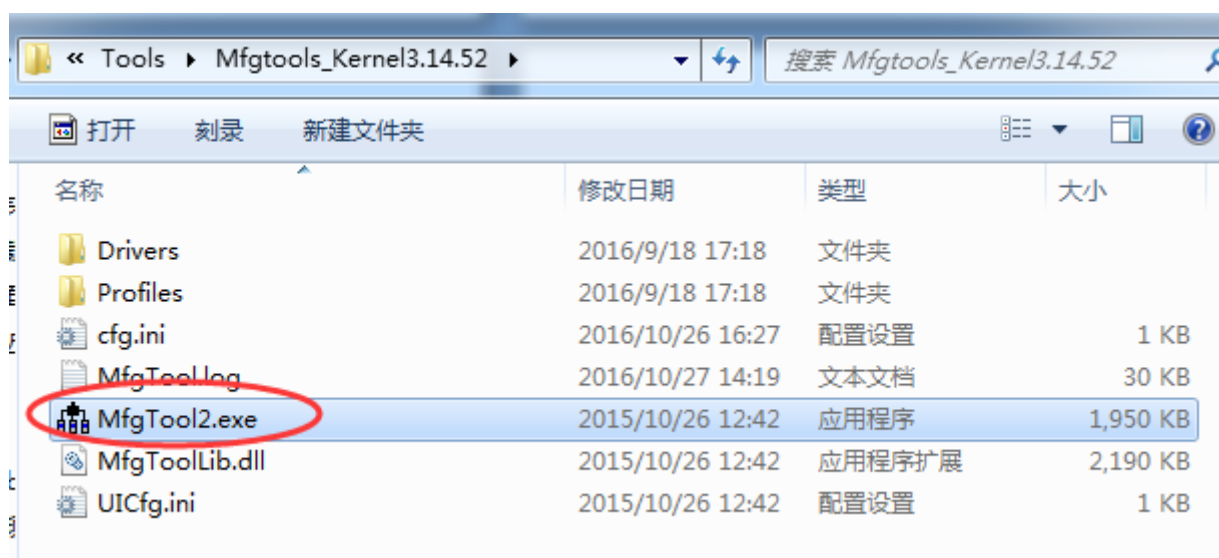


Figure 178: Run **MfgTools2.exe** file

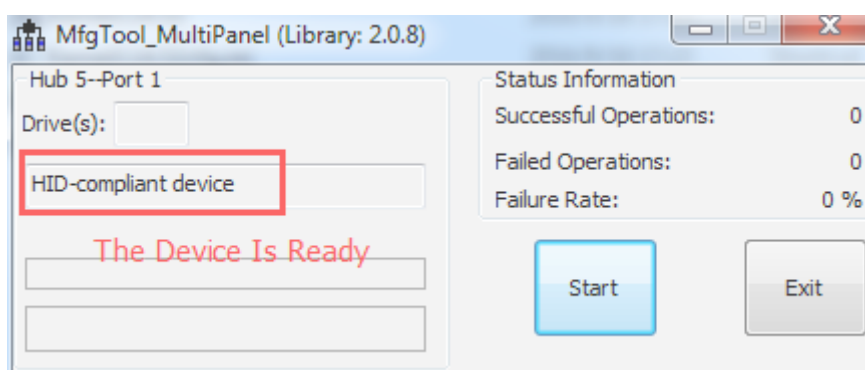


Figure 179: Prepare to start

Note

If you get a message saying *No Device Connected*, check the USB-OTG cable to ensure it is ready.

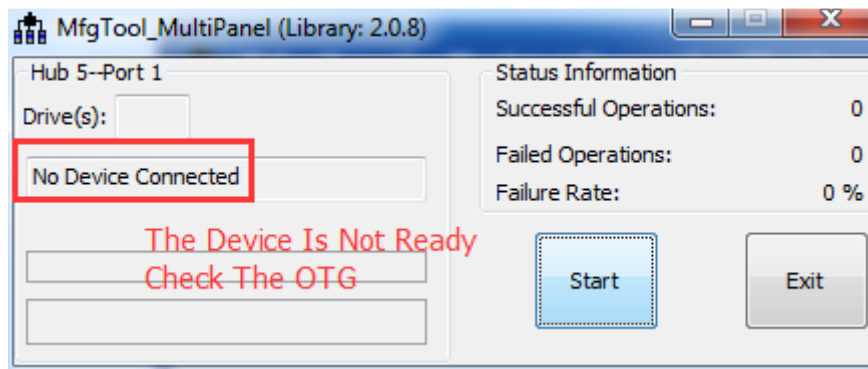


Figure 180: The USB-OTG cable is not connected correctly.

5. Click on Start button to download the Image.

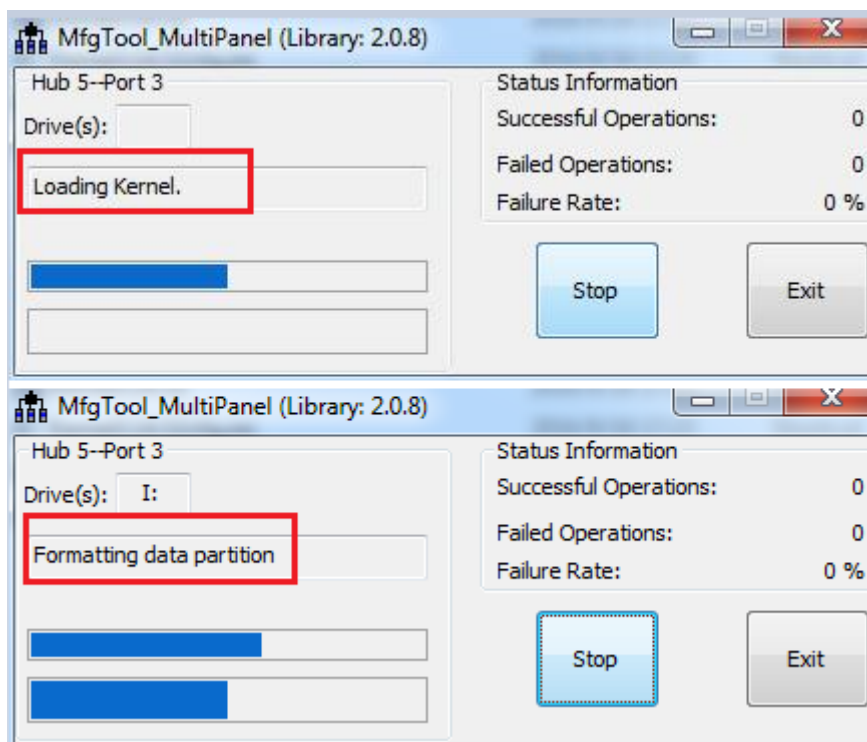
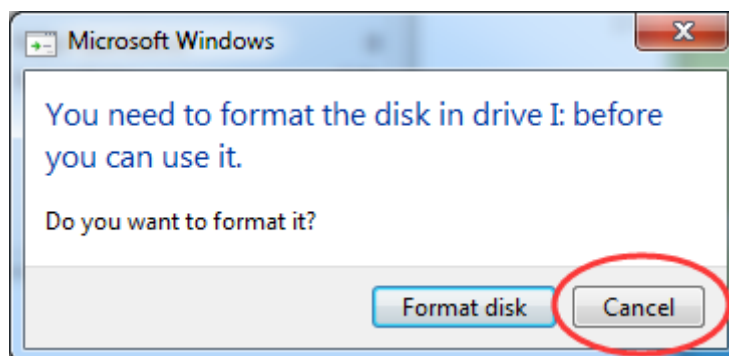


Figure 181: Loading Kernel and Formatting rootfs partition

Note

If you are using a Window 7 PC, you will receive a prompt that asks you to format the disk. Please ignore or cancel it.



6. When the process is complete, you click the Stop button to stop downloading Image and exit.

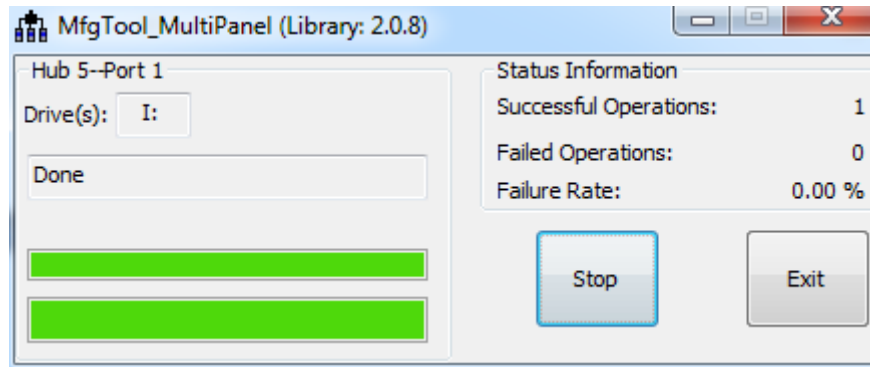


Figure 182: Download Image is finished

Downloading Images by using the TF card

Follow the steps below to download images onto the eMMC by using the TF Card:

1. Copy the Prebuilt Files Package to a Linux environment (such as Ubuntu 14.04).
2. Insert the SD card into your computer. If you are using virtual machines, please ensure the SD card is mounted to the Linux operating system.
3. **Confirm the SD card mount point, `/dev/sdX` (e.g., `/dev/sdc` or `/dev/sdb` , be sure to use the right one). In a Linux system, you can use the command below to find out what `X` is.**

```
$ sudo fdisk -l
```

4. Copy the `prebuilt-imxv1-csXXXXXfXXXvX-android6-emmc-YYYYMMDD.tar.gz` to somewhere(such as \$HOME) on the Ubuntu PC.
5. **Extract the `prebuilt-imxv1-csXXXXXfXXXvX-android6-emmc-YYYYMMDD.tar.gz`**

```
$ tar -xzf prebuilt-imxv1-csXXXXXfXXXvX-android6-emmc-YYYYMMDD.tar.gz
```

6. Go to the folder

```
$ cd prebuilt-imxv1-csXXXXXfXXXvX-android6-emmc-YYYYMMDD
```

7. Use the following command to flash the Android 6.0 OS to the SD card

```
$ sudo ./mksdcard.sh --device /dev/sd<?>
```

Note

- `sd<?>` means the SD card mount point, (e.g., `/dev/sdc` or `/dev/sdb`) in Ubuntu system.
- The recommended SD card should be Sandisk Class4 level SD card or above.

8. The bootable SD Card is now ready. Power OFF the industrial PC and insert the SD Card.
9. Set the switch S1 to TF card boot mode. (refer to [Boot Switch Configuration](#) above)
10. Connect the industrial PC to PC via COM1. Power ON the IPC.
11. After 20 minutes, if the LED on industrial PC stays lit, flashing is completed. Using COM1, you can also find this message `>>>>>> eMMC Flashing Completed <<<<<<` which indicates that the system image was downloaded correctly to the eMMC.

12. Power OFF and set the switch S1 to eMMC boot mode. (refer to [Boot Switch Configuration](#) above)

Booting Android OS And Test(Using 7inch as example)

The first time you start Android 6.0 OS on the industrial PC will take a little time. But after the first time, Android 6.0 OS will start quickly. It is a successful start if you see the Android 6.0 OS desktop such as the one shown in the figure below:

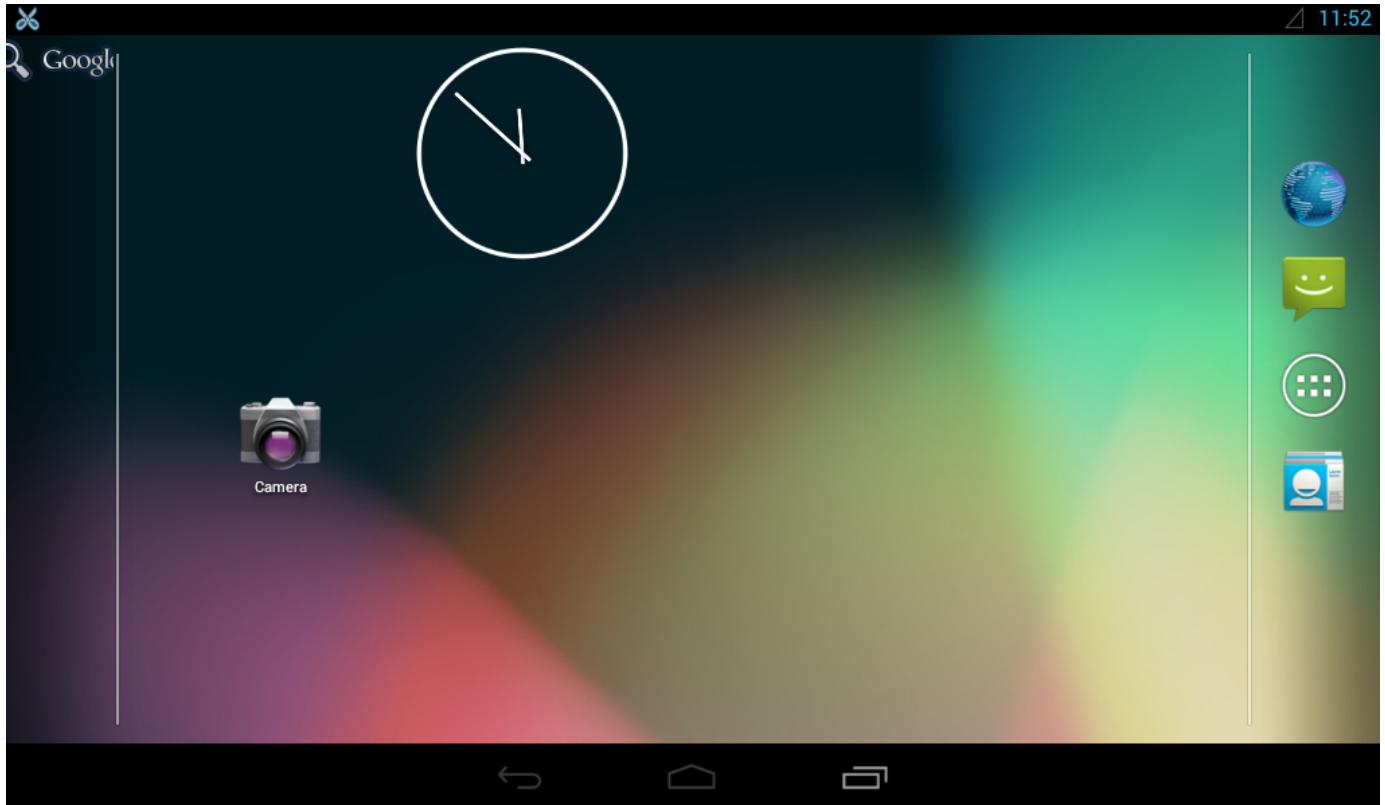


Figure 183: *Android Desktop Screen*

SD Test

The IPC supports SD card hot-plug. The figure below shows the message when you plug the SD card into IPC. The IPC will mounts the SD Card to `/mnt/media_rw/` and `/storage/` directory.

```
root@sabresd_6dq:/ # mmc1: host does not support reading read-only switch. assuming write-enable.  
mmc1: new high speed SDHC card at address 59b4  
mmcblk1: mmc1:59b4 S508G 7.40 GiB  
mmcblk1: p1 p2  
FAT-fs (mmcblk1p1): volume was not properly unmounted. some data may be corrupt. Please run fsck.
```

Figure 184: *Serial Message*

USB Flash Disk Test

The USB Flash Disk is like the SD Card. The IPC mounts the USB Flash Disk to `/mnt/media_rw/` and `/storage/` directory.

```
usb 1-1.2: new high-speed USB device number 4 using ci_hdrc
usb 1-1.2: New USB device found, idVendor=05e3, idProduct=0736
usb 1-1.2: New USB device strings: Mfr=3, Product=4, SerialNumber=2
usb 1-1.2: Product: USB Storage
usb 1-1.2: Manufacturer: Generic
usb 1-1.2: SerialNumber: 000000000272
usb-storage 1-1.2:1.0: USB Mass Storage device detected
scsi1 : usb-storage 1-1.2:1.0
scsi 1:0:0:0: Direct-Access          Generic STORAGE DEVICE    0272 PQ: 0 ANSI: 0
sd 1:0:0:0: [sda] 15529984 512-byte logical blocks: (7.95 GB/7.40 GiB)
sd 1:0:0:0: [sda] Write Protect is off
sd 1:0:0:0: [sda] No Caching mode page found
sd 1:0:0:0: [sda] Assuming drive cache: write through
sd 1:0:0:0: [sda] No Caching mode page found
sd 1:0:0:0: [sda] Assuming drive cache: write through
sda: sda1 sda2
sd 1:0:0:0: [sda] No Caching mode page found
sd 1:0:0:0: [sda] Assuming drive cache: write through
sd 1:0:0:0: [sda] Attached SCSI removable disk
```

Figure 185: USB flash disk test

Network Test

The network uses DHCP to get IP Addresses. You can use the **ethernet app** to set a static IP, to check the obtained IP from the router, and to set the proxy.

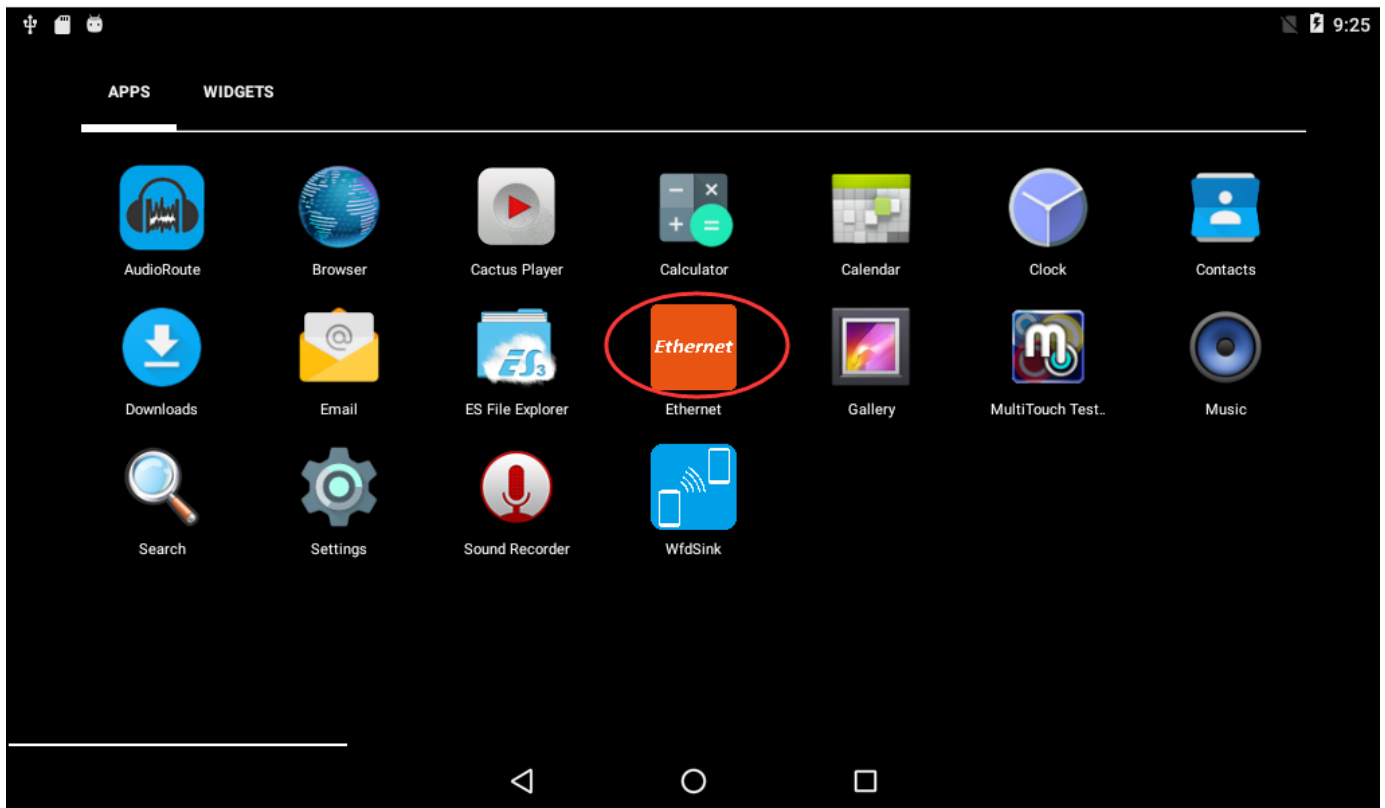


Figure 186: *Ethernet App*

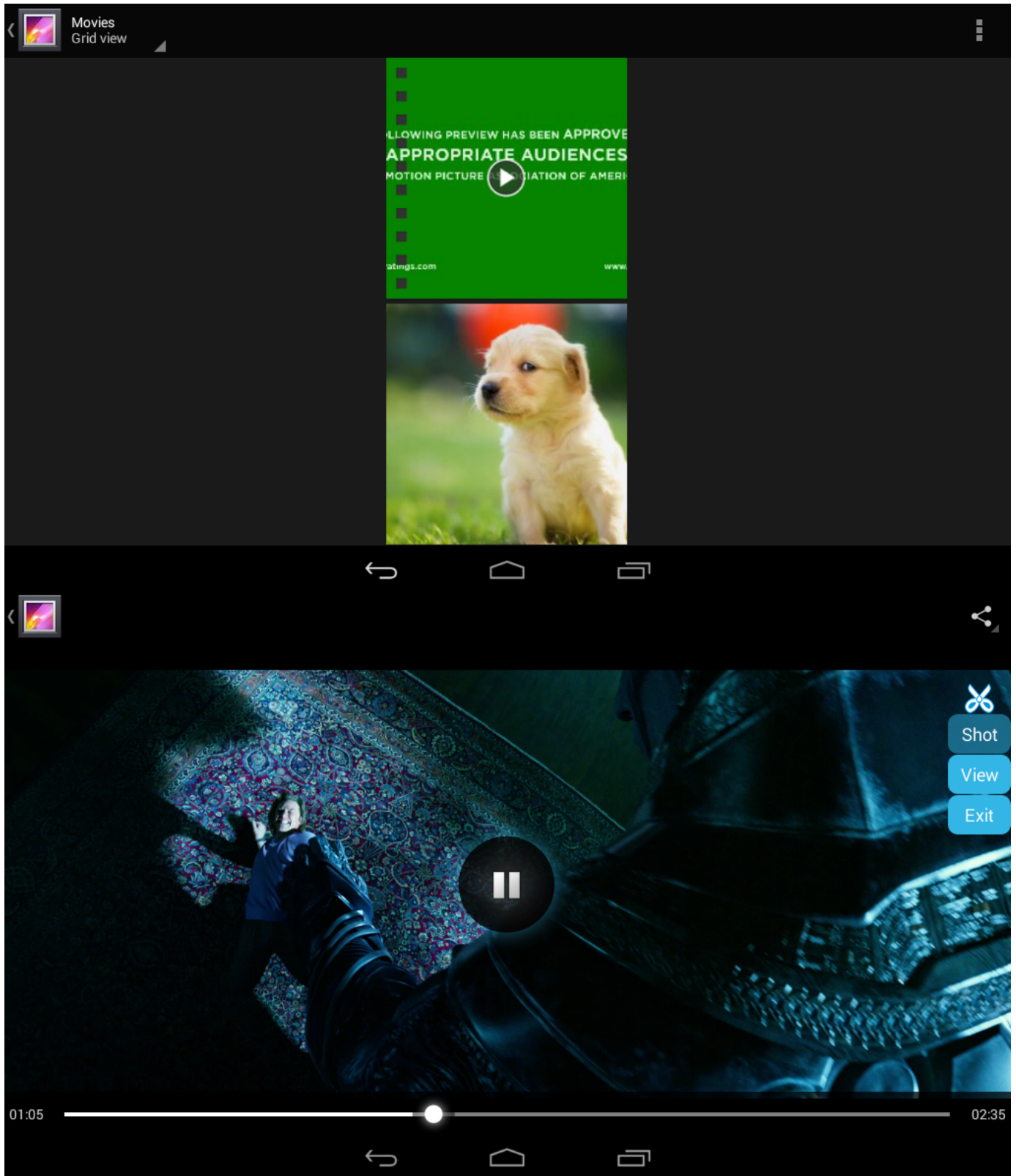
Sound Card Test

Please open an audio file to test the Sound Card.



Video Test

Please open a video file to test the Video.



HDMI Test

You can reference this document, [IMX6Q U-boot Setting HDMI Output For Android.pdf](#), to learn about performing HDMI tests.

Note

HDMI does not support hot-plug. The sound comes from the HDMI monitor, neither the speaker nor the headset on board.

WIFI Test

You must ensure the IPC has an SDIO Wi-Fi module integrated before performing the Wi-Fi test. If the IPC has an SDIO Wi-Fi Module, you can connect to the Wi-Fi and open a browser to test.

ADB Test

Android 6.0 OS enables USB Debug by default.

You just need to insert the OTG cable into the IPC, and allow USB debugging.

Also, you can use the ADB tool in the tools directory to test the ADB.

- **Unzip it to the root directory of your Windows PC (Drive C), as shown on the figure below.**

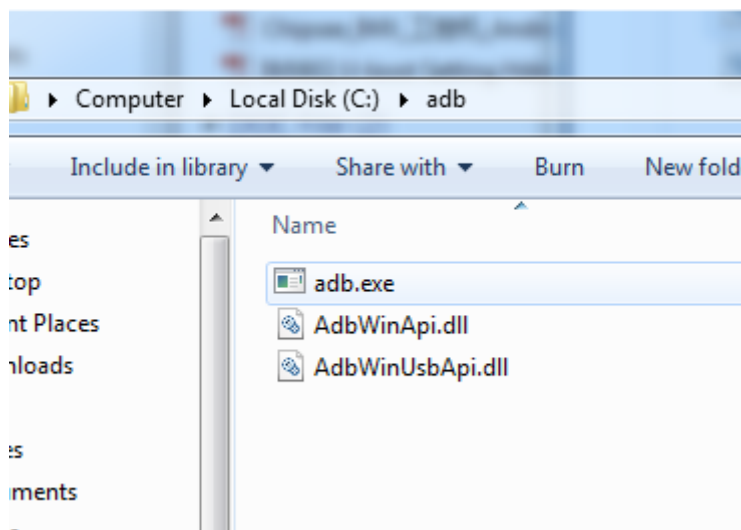


Figure 187: Unzip adb.rar to c:\

- **You need to add path of the ADB directory to system’s environment variable. Follow the steps described in the figures below to set the environment variable.**

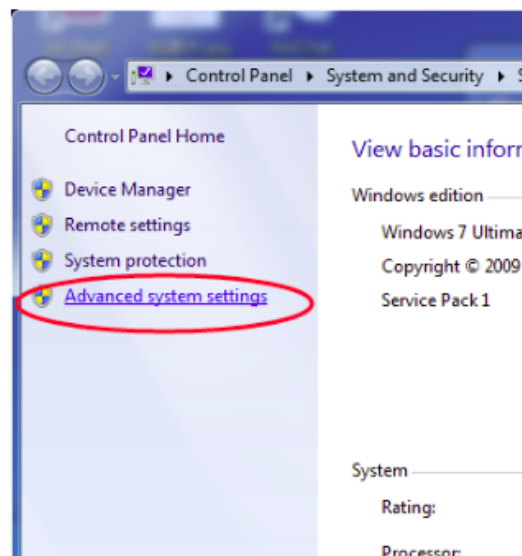
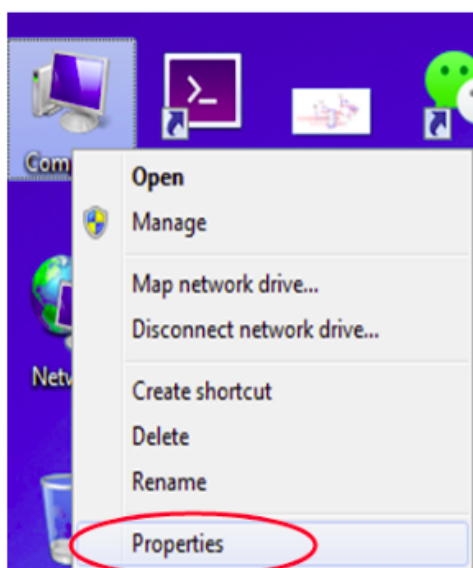


Figure 188: Open Advance system settings

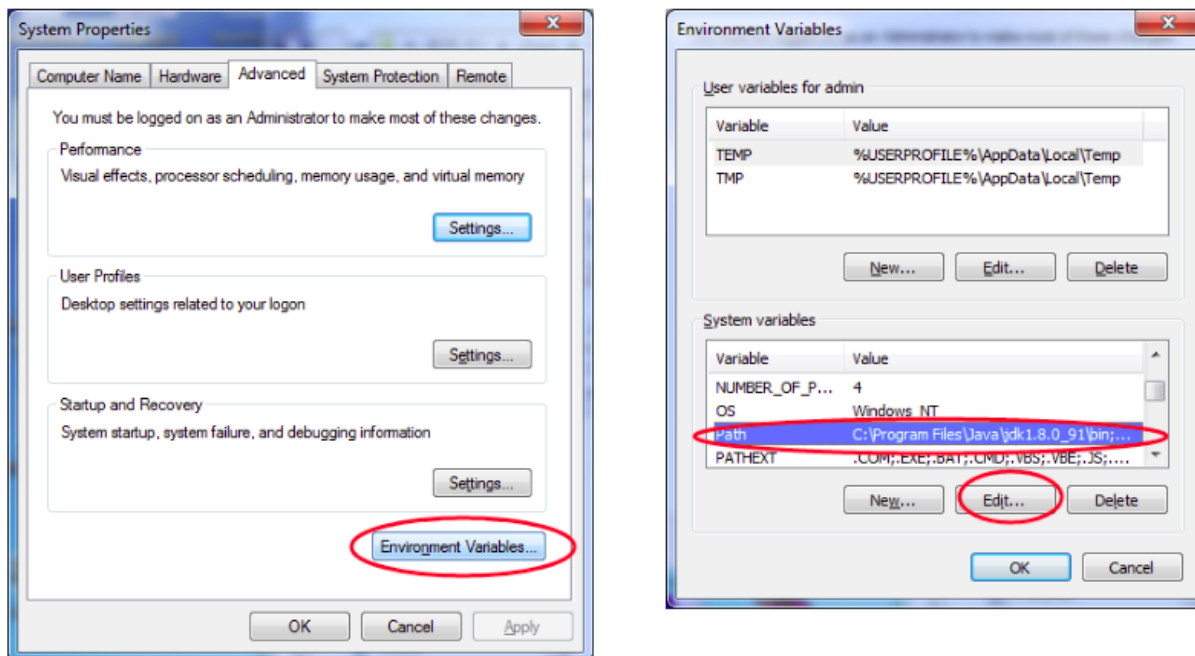


Figure 189: Open and edit the ***Path** system variable*

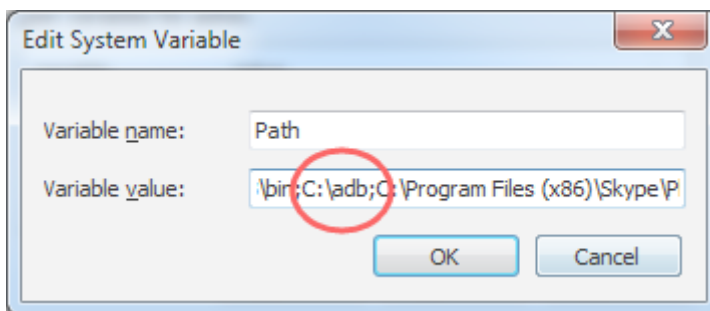


Figure 190: Add path of the ADB directory to the **Path** system variable

- Open the command-prompt on Windows and enter this command `adb version` , as shown on the figure below. The process is successful, if the command-prompt displays the version number of ADB.

```
C:\Users\admin>adb version
Android Debug Bridge version 1.0.31

C:\Users\admin>
```

Figure 191: ADB tool is working

- Connect the USB-OTG cable from the Windows PC to IPC. You will get a message Allow USB debugging?. Please select Always allow from this computer and click Ok.

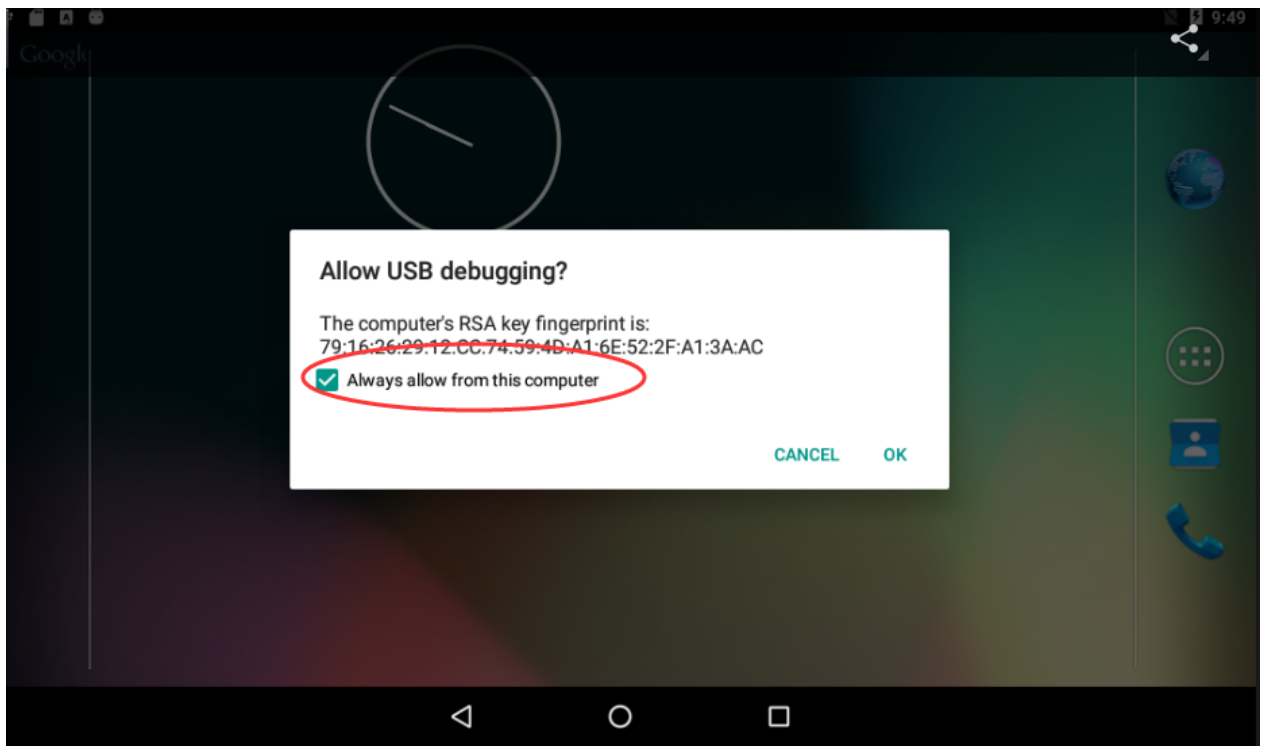


Figure 192: Enable USB debugging

You can list the devices attached to the Windows PC with this command.

```
$ adb devices
```

```
C:\Users\admin>adb devices
List of devices attached
0123456789ABCDEF      device
```

Figure 193: Checking devices attached

You can install an android app from the Windows PC onto the IPC with this command.

```
$ adb install XXX.apk
```

```
C:\Users\admin>adb install E:\share\APK\com.rovio.angrybirds-1.apk
1305 KB/s (29000466 bytes in 21.685s)
  pkg: /data/local/tmp/com.rovio.angrybirds-1.apk
Success
C:\Users\admin>
```

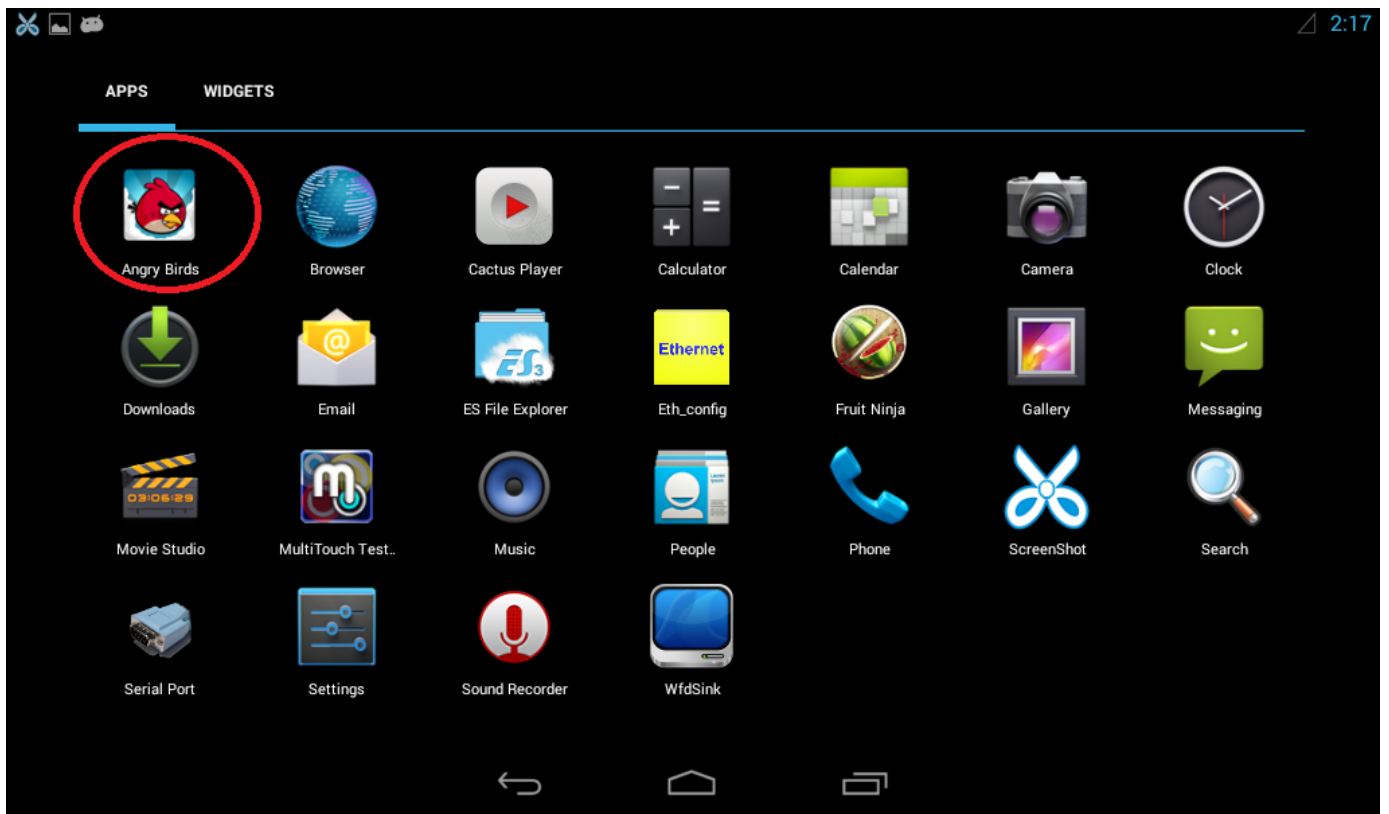



Figure 194: Install android app

Touch Screen Test

Run **MultiTouch** Tester App.

The screen will show the number and position of the touch point when touching the screen.

Note

- Resistive screen expansion board only supports single-touch, and capacitive screen expansion board supports five-point touch as described in the figure below.
- The 21.5", 19", and 17" capacitive screen supports a ten-point touch.

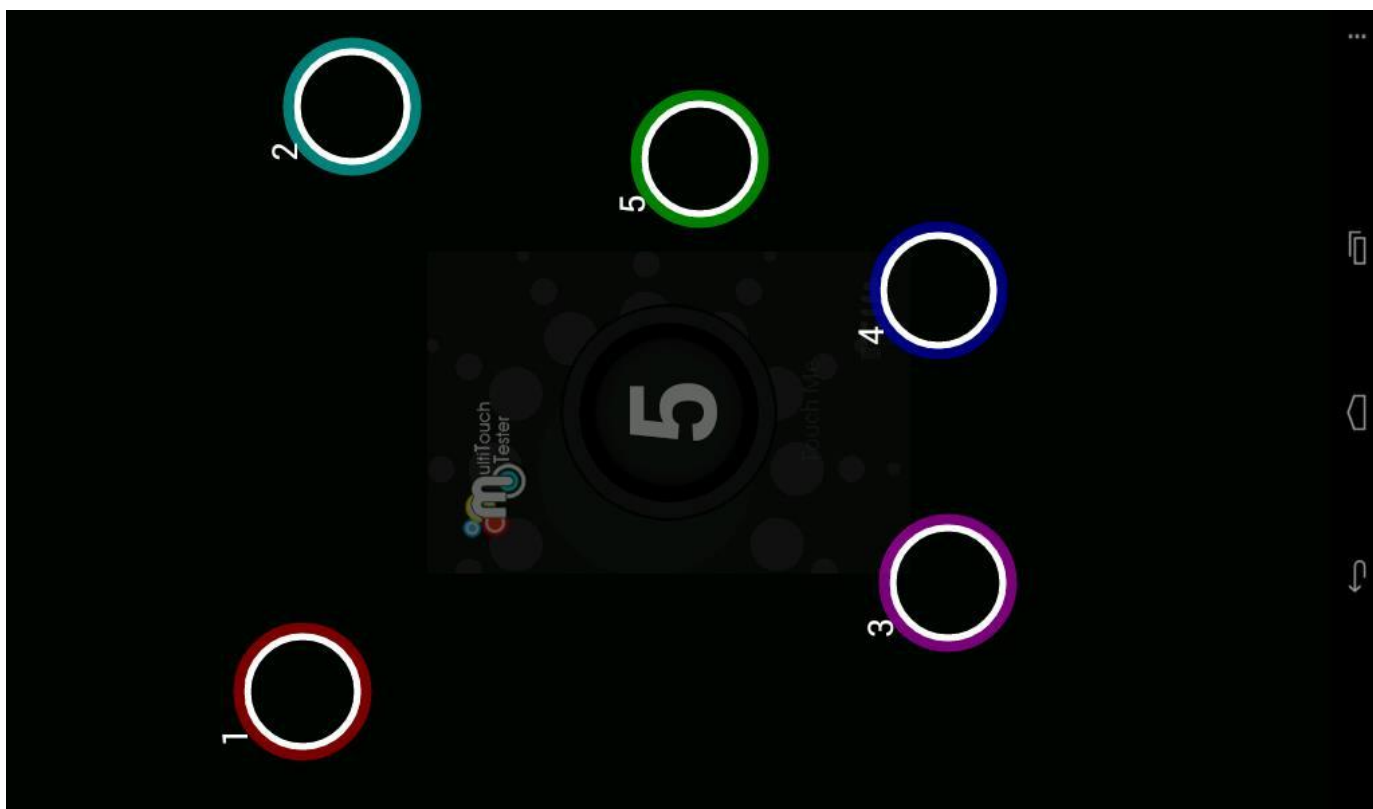


Figure 195: Touch screen test (Capacitive touch)

Serial Test

There are five serial ports on the Chipsee IPC: 2 x RS232 and 3 x RS485 (can be customised). Refer to the table below for the available serial device nodes.

| Ports | Device Node |
|--------------------|--------------|
| COM1(RS232, Debug) | /dev/ttymxc0 |
| COM2(RS485) | /dev/ttymxc1 |
| COM3(RS232) | /dev/ttymxc2 |
| COM4(RS485) | /dev/ttymxc3 |
| COM5(RS485) | /dev/ttymxc4 |

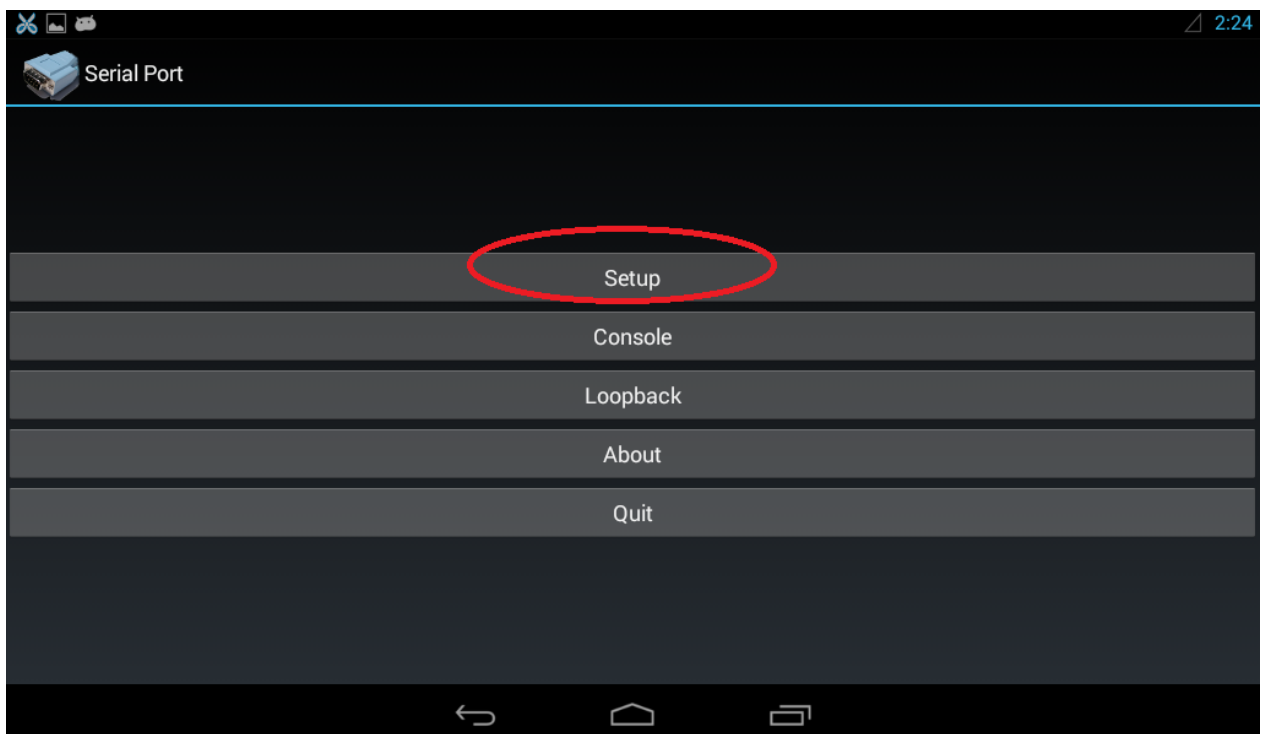
Table 45 Serial Ports Nodes on the System

Note

If you use COM2(RS485), you can't use Bluetooth because COM2(RS485) share pin with Bluetooth.

You can install the **SecureCRT** or **Putty** software on a Windows 7 PC to test the serial ports by following these steps:

- Connect COM1 on industrial PC board to Windows 7 PC.
- **Run Serial Port API App to communicate with Windows 7 PC, as shown on the figure below.**



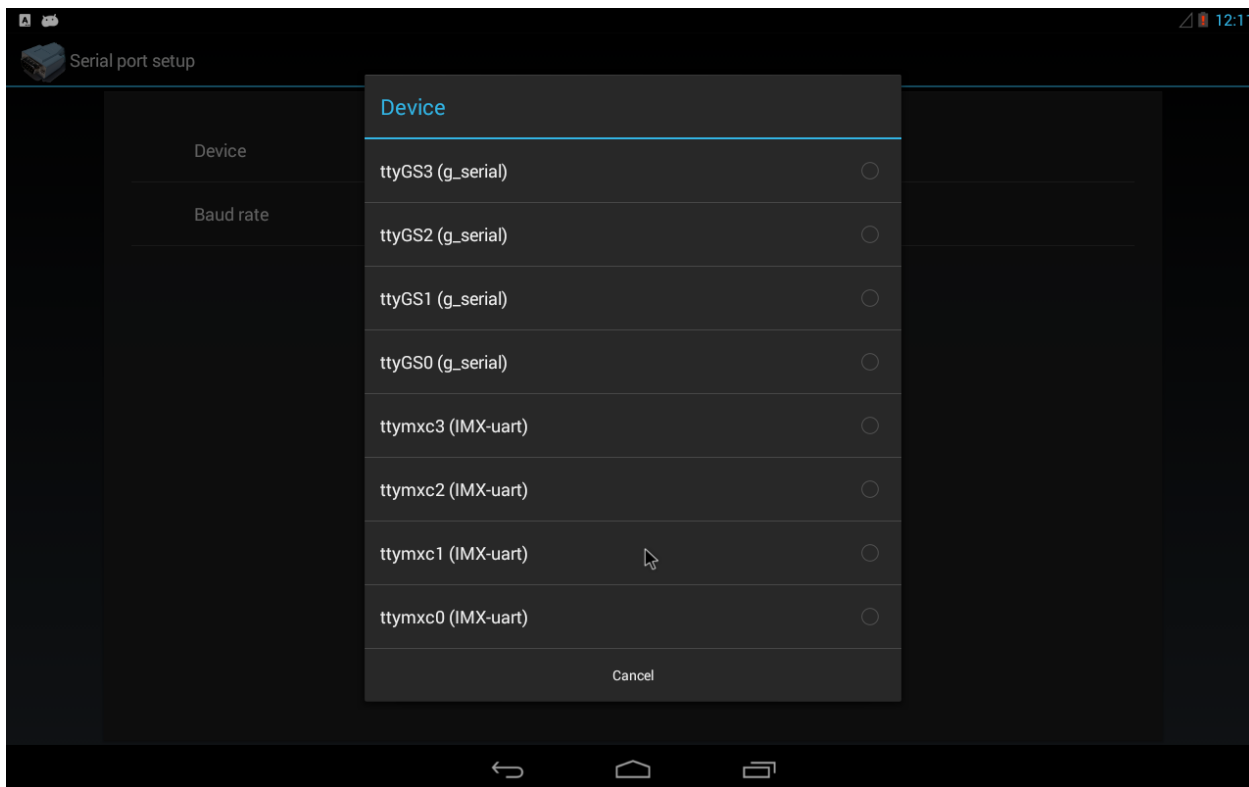


Figure 196: Serial settings

- Push the button with the label “Send 01010101”, you will see something on the Windows 7 PC that looks similar to the figure below.

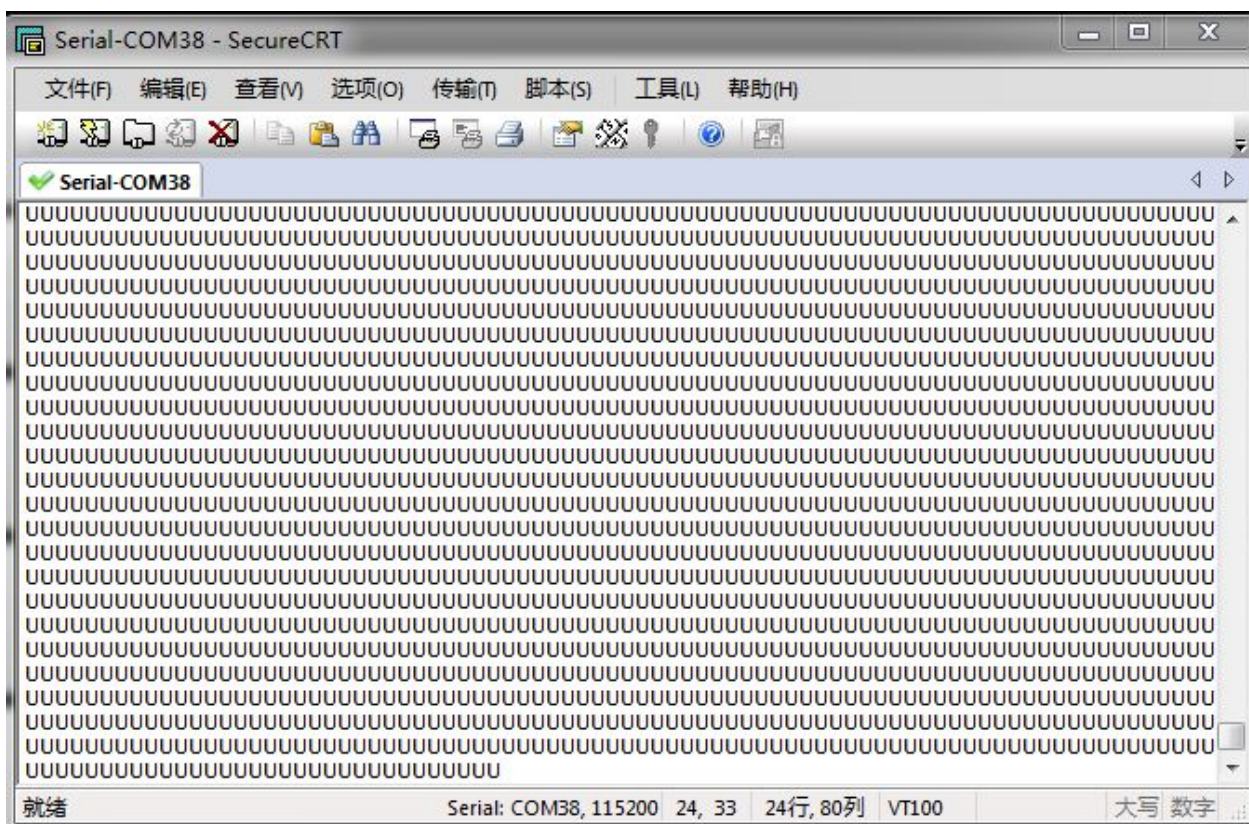


Figure 197: Serial send test

- Push the button with the label “Console”, to send whatever you like as shown on the figure below.

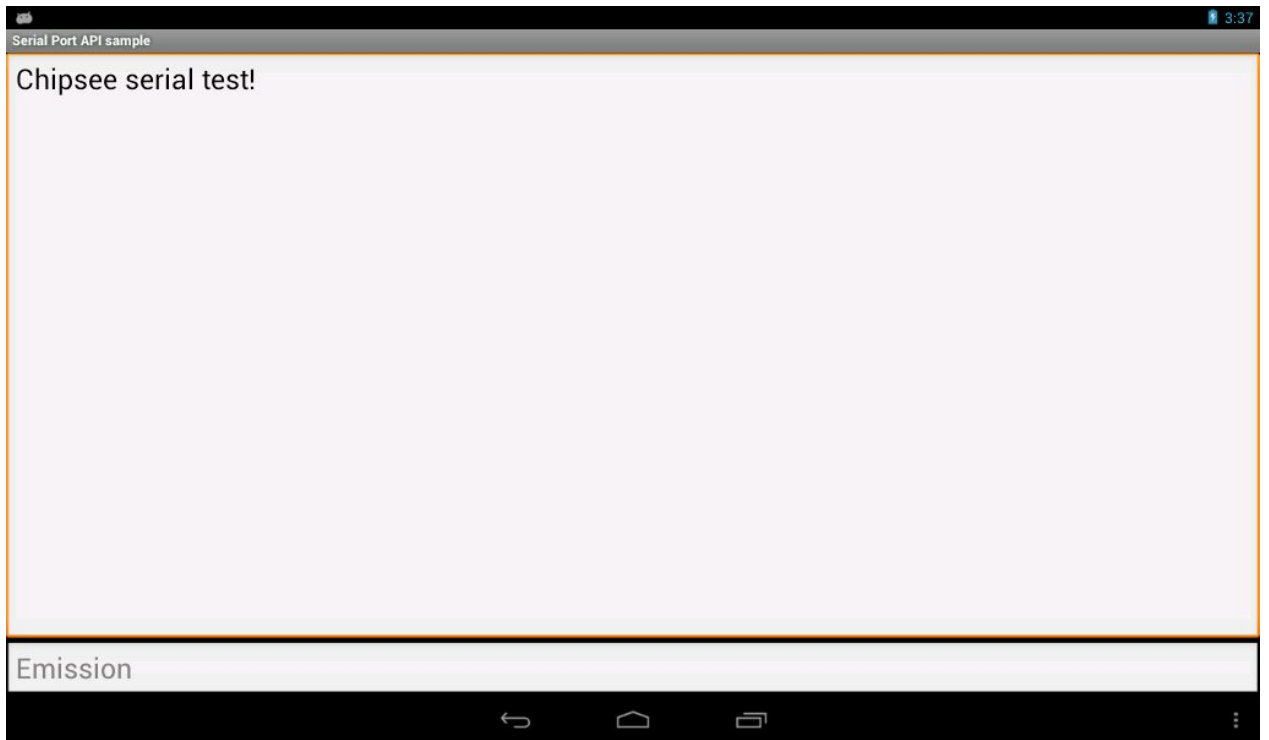


Figure 198: *Serial receive test*

GPIO

For the **CS12800F101** IPC, there are 8 GPIO ports that you can set as output or input with LOW as 0V; the HIGH as 3.3V.

Please check the **GPIO Connector** section in **CS12800F101** to know the position of the GPIO Connector. Refer to the table below for the available GPIO nodes on system.

For the **CS10600F070** IPC, there are 8 GPIO ports that you can set as output or input with LOW as 0V; the HIGH as 3.3V.

Please check the **GPIO Connector** section in **CS10600F070** to know the position of the GPIO Connector. Refer to the table below for the available GPIO nodes on system.

Note

The V1 and V2 of CS10600F070 GPIO is not same.

You can use **GPiODemo** app to test the GPIO.

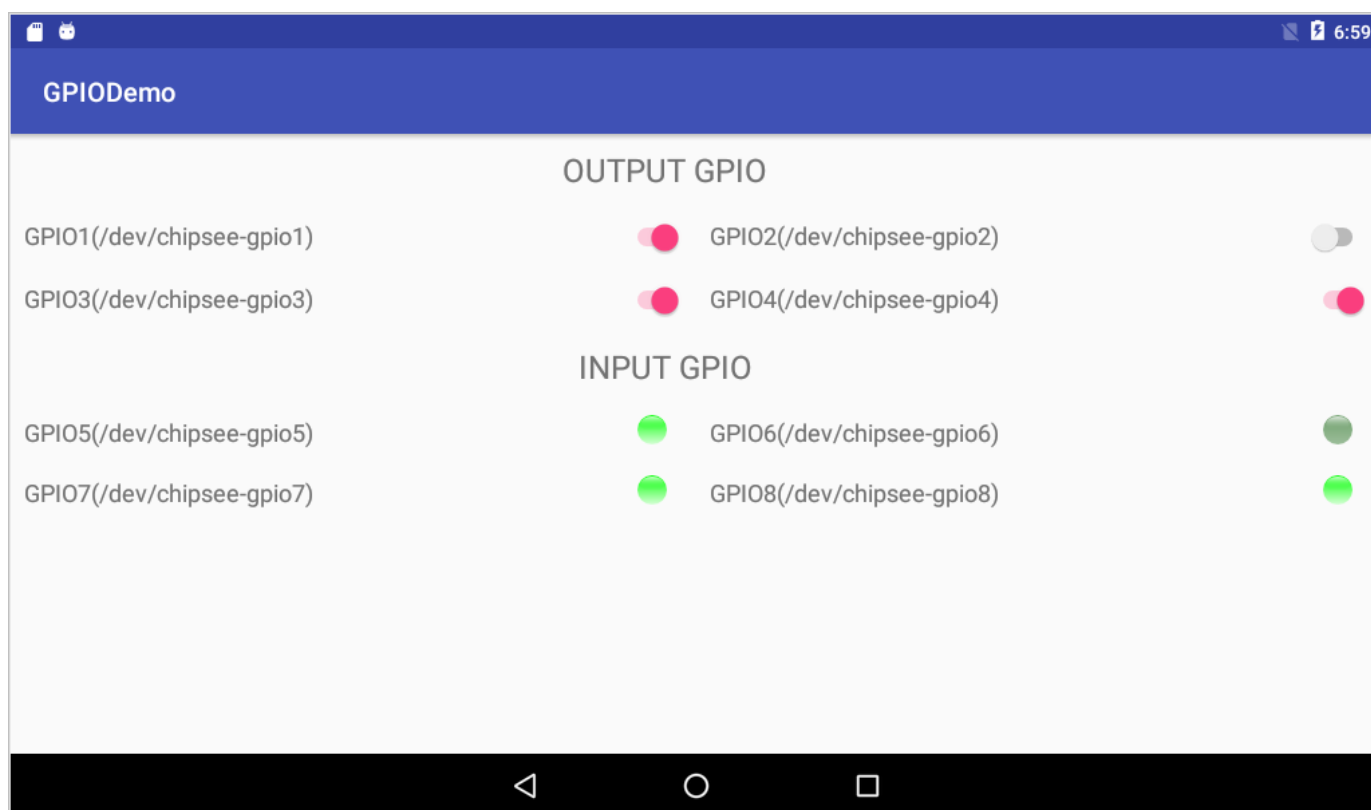


Figure 199: GPiODemo app

MODIFY LOGO

This system supports changing the logo by yourself. There are two ways:

- Replace the logo file in prebuilt images packages, and download images.
- Change the logo without downloading images.

Note

Logo file is one 32bpp, format is bmp.

Method 1 - Downloading images

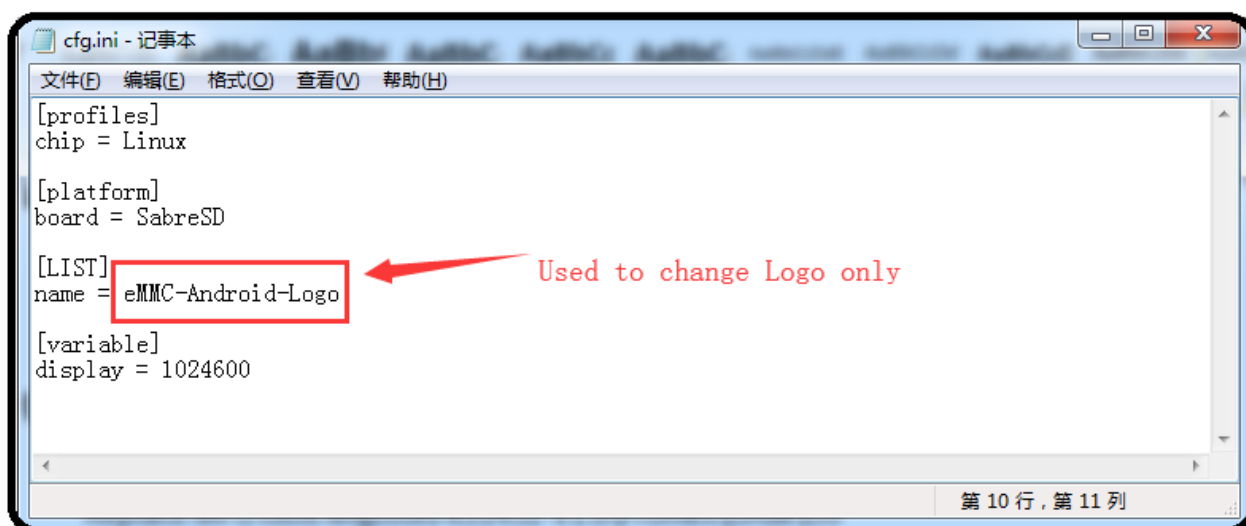
Replace the `prebuilt-xxx/emmc-flash/emmc/logo.bmp` and reference [Prepare Manufacturing Tool and Image](#) and [Downloading Images by using MFGTool](#) to flash the image.

Method 2 - Don't Download Images

We will use **MFGTools** and the **Logoflasher** apps to change the logo.

Use MFGTools to Change LOGO

- Replace the `logo.bmp` file in `Mfgtools-K31452-V1.0\Profiles\Linux\OS Firmware\files\ubuntu` with your customised logo file.
- **Open and edit the `Mfgtools-K31452-V1.0\cfg.ini` file and set the `name` variable to `eMMC-Android-Logo` as shown below.**



| PIN Number | GPIO Number | Devices File | Direction |
|------------|-------------|--------------------|-----------|
| 3 | gpio106 | /dev/chipsee-gpio7 | IN |
| 4 | gpio30 | /dev/chipsee-gpio3 | OUT |

| PIN Number | GPIO Number | Devices File | Direction |
|------------|-------------|--------------------|-----------|
| 6 | gpio95 | /dev/chipsee-gpio6 | IN |
| 7 | gpio87 | /dev/chipsee-gpio4 | OUT |
| 8 | gpio29 | /dev/chipsee-gpio1 | OUT |
| 9 | gpio28 | /dev/chipsee-gpio2 | OUT |
| 11 | gpio94 | /dev/chipsee-gpio5 | IN |
| 12 | gpio130 | /dev/chipsee-gpio8 | IN |

Table 46 CS12800F101 P18

| PIN Number | GPIO Number | Devices File | Direction |
|------------|-------------|--------------------|-----------|
| 21 | gpio106 | /dev/chipsee-gpio7 | IN |
| 22 | gpio29 | /dev/chipsee-gpio1 | OUT |
| 23 | gpio30 | /dev/chipsee-gpio3 | OUT |
| 24 | gpio28 | /dev/chipsee-gpio2 | OUT |
| 27 | gpio95 | /dev/chipsee-gpio6 | IN |
| 28 | gpio94 | /dev/chipsee-gpio5 | IN |
| 29 | gpio87 | /dev/chipsee-gpio4 | OUT |
| 30 | gpio130 | /dev/chipsee-gpio8 | IN |

Table 47 CS10600F070V1 P21

| PIN Number | GPIO Number | Devices File | Direction |
|------------|-------------|--------------------|-----------|
| 21 | gpio29 | /dev/chipsee-gpio1 | OUT |
| 22 | gpio106 | /dev/chipsee-gpio7 | IN |
| 23 | gpio28 | /dev/chipsee-gpio2 | OUT |
| 24 | gpio30 | /dev/chipsee-gpio3 | OUT |
| 27 | gpio130 | /dev/chipsee-gpio8 | IN |
| 28 | gpio87 | /dev/chipsee-gpio4 | OUT |
| 29 | gpio94 | /dev/chipsee-gpio5 | OUT |
| 30 | gpio95 | /dev/chipsee-gpio6 | IN |

Table 48 CS10600F070V2 P21

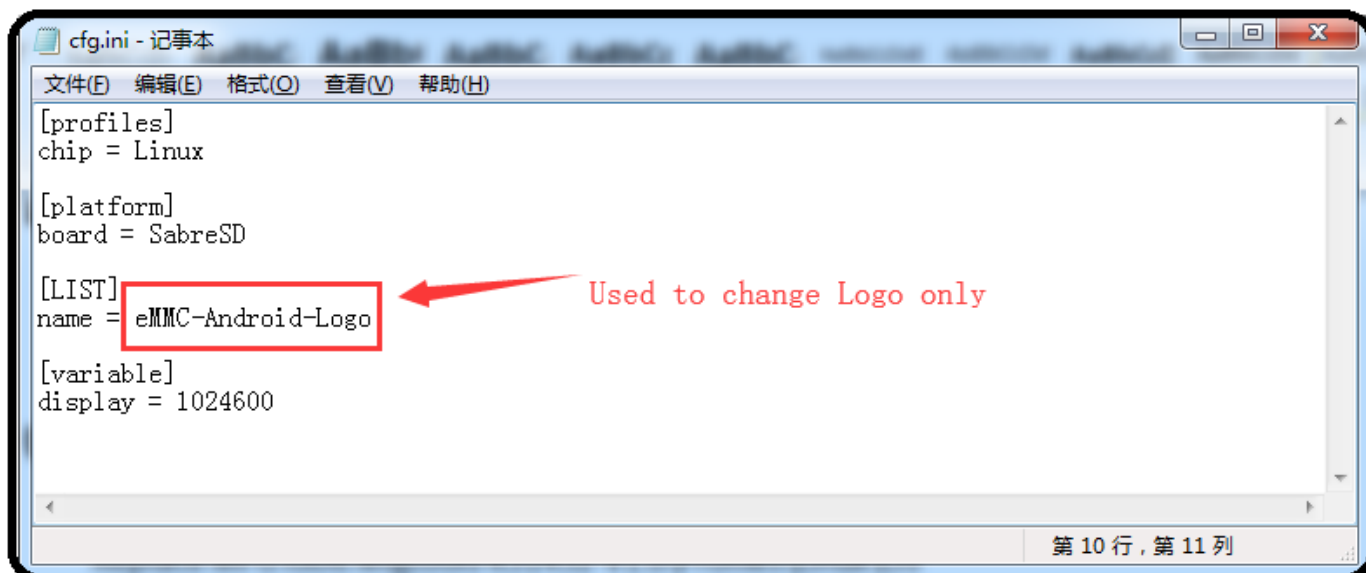


Figure 200: Logo Modify with MFGTool

Use Logoflasher to Change Logo

You can get the [Logoflasher](#) file and use these tools to make one bootable TF card. Follow the steps below to change logo

- Use the following commands to make bootable TF card.

```

$ sudo tar zxvf prebuilt-imx6qdl-bootfile-update-xxx.tar.gz
$ sudo cd prebuilt-imx6qdl-bootfile-update-xxx
$ sudo ./mksdcard.sh --device /dev/sdX --display 1024600 //
resolution

```

- Put your custom logo file in the first partition `boot-flash` directory on the TF Card.
- Set boot mode to **TF card**. You can reference [Boot Switch Configuration](#).
- Power ON the IPC. If you see this message, >>>>>> **eMMC Flashing Completed** <<<<<<, you are done:

Android 6.0 system debug in Windows

In this section, we will discover how to view the Android 6.0 system via the serial port and debug the system via USB OTG.

Also, we will discover how to install and uninstall applications via USB OTG.

The following operation is under the Windows 7 x64 environment, similar to other Windows platforms.

View Android 6.0 system via the serial port

Install the **SecureCRT** or **Putty** software on a Windows 7 PC to view the Android 6.0 system via the serial ports.

Follow these steps to view Android 6.0 system via the serial port:

- Connect COM1 on the industrial PC board to Windows 7 PC.
- **Open the SecureCRT or Putty software on the Windows 7 PC and configure it as shown on the figure below.**

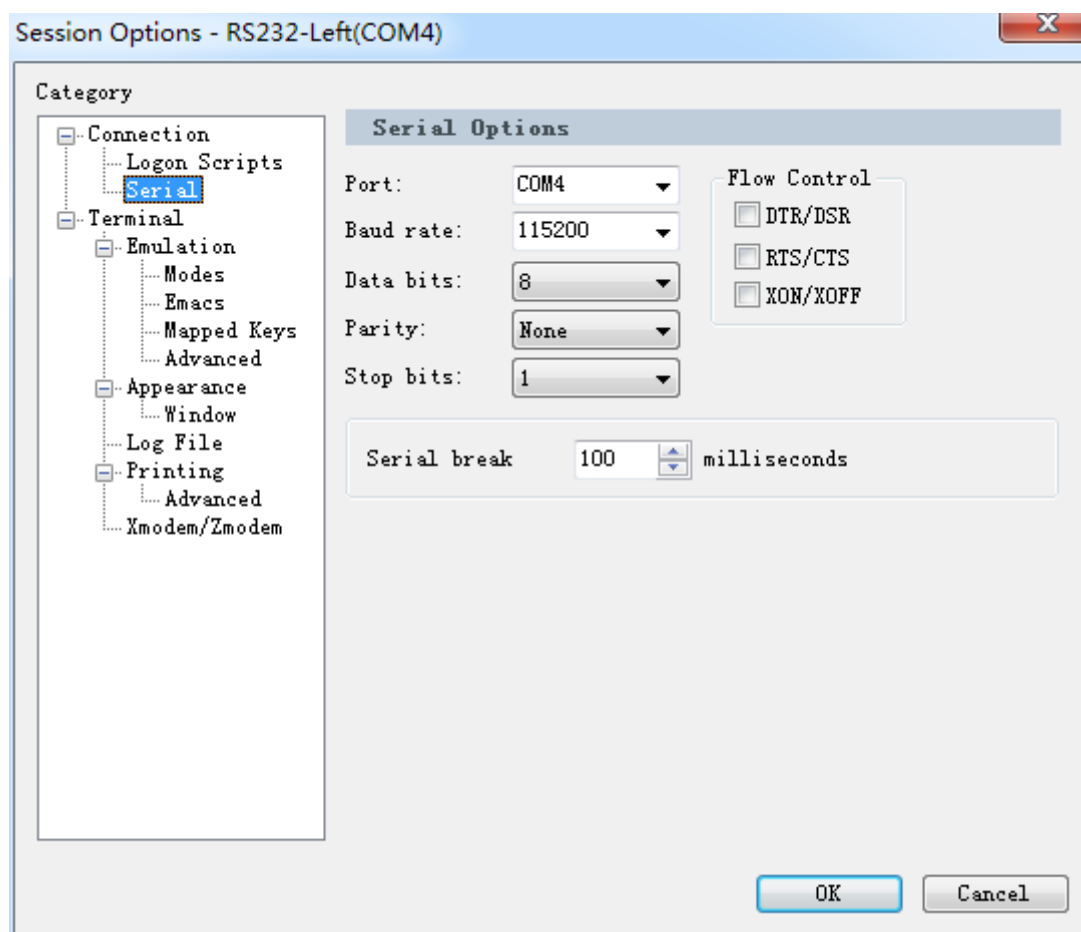


Figure 201: SecureCRT configuration

- **Power ON the industrial PC. You will see the serial output information as shown on the figure below.**

```

U-Boot 2015.04-14469-g9433975-dirty (Jan 17 2017 - 13:14:43)

CPU:   Freescale i.MX6Q rev1.5 at 792 MHz
CPU:   Temperature 38 C
Reset cause: POR
Board: MX6-Sabresd
I2C:   ready
DRAM:  2 GiB
MMC:   FSL_SDHC: 0, FSL_SDHC: 1, FSL_SDHC: 2
*** warning - bad CRC, using default environment

display: INNOLUX7 (1024x600)
In:    serial
Out:   serial
Err:   serial
check_and_clean: reg 0, flag_set 0
Fastboot: Normal
flash target is MMC:2
Net:   Phy 1 not found
PHY reset timed out
FEC [PRIME]
Error: FEC address not set.

Normal Boot
Hit any key to stop autoboot:  0
boota mmc2
kernel @ 14008000 (8177824)
ramdisk @ 15000000 (1036210)
fdt @ 14f00000 (45438)
## Booting Android Image at 0x12000000 ...
kernel load addr 0x14008000 size 7987 KiB
kernel command line: console=ttyMXC0,115200 init=/init video=mxcfb0:dev=ldb,bpp=32 video=mxcfb1:off video=mxcfb2:off vt
:off vmalloc=256M androidboot.console=ttyMXC0 consoleblank=0 androidboot.hardware=freescale cma=384M androidboot.selinu
androidboot.dm_verity=disabled
## Flattened Device Tree blob at 14f00000
   Booting using the fdt blob at 0x14f00000
   Loading Kernel Image ... OK
   Using Device Tree in place at 14f00000, end 14f0e17d

Starting kernel ...

```

Figure 202: Serial output information

- You can communicate with the system when system boot is complete.

Adb connect via USB OTG

Please refer to the [ADB Test](#) chapter to learn how to set the ADB, how to install an app via ADB, and how to debug with ADB.

You can use the following command to log in to the board and communicate with it.

```
> adb shell
```

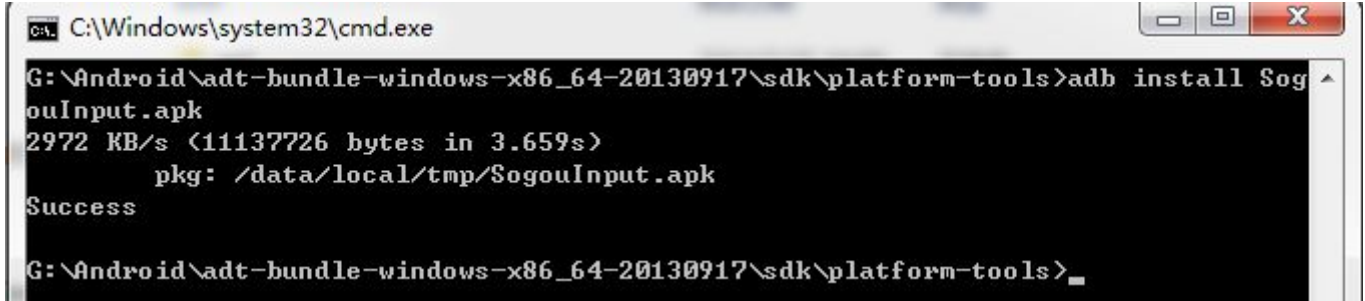
```
C:\Users\Chipsee>adb shell
shell@sabresd_6dq:/ $ su
su
root@sabresd_6dq:/ # ls
ls
acct
cache
charger
config
d
data
default.prop
dev
device
etc
file_contexts
fstab.freescale
init
init.chipsee.sh
init.envron.rc
init.freescale.i.MX6DL.rc
init.freescale.i.MX6Q.rc
init.freescale.i.MX6QP.rc
init.freescale.rc
init.freescale.usb.rc
init.rc
init.recovery.imx6.rc
init.trace.rc
init.usb.configfs.rc
init.usb.rc
init.zygot32.rc
```

Figure 203: ADB Shell

Use ADB command to install user APP

Use the `adb` command to install an Android App: for example SogouInput.apk. If there is a **SUCCESS** message, as shown on the figure below, then the app installation was successful.

```
> adb install SogouInput.apk
```



```
C:\Windows\system32\cmd.exe
G:\Android\adt-bundle-windows-x86_64-20130917\sdk\platform-tools>adb install SogouInput.apk
2972 KB/s (11137726 bytes in 3.659s)
  pkg: /data/local/tmp/SogouInput.apk
Success
G:\Android\adt-bundle-windows-x86_64-20130917\sdk\platform-tools>
```

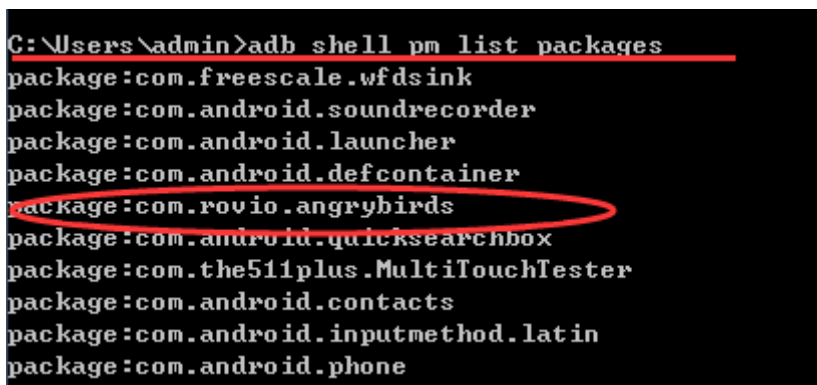
Figure 204: Install App

Use ADB command to uninstall user APP

Use `adb` command to uninstall an Android app: for example AngryBirds.apk. Follow these commands to uninstall an app.

```
> adb shell pm list packages
> adb uninstall com.rovio.angrybirds
```

- The `pm list` command gets the full name of the app, as shown on the figure below.



```
G:\Users\admin>adb shell pm list packages
package:com.freescale.wfdsink
package:com.android.soundrecorder
package:com.android.launcher
package:com.android.defcontainer
package:com.rovio.angrybirds
package:com.android.quicksearchbox
package:com.the511plus.MultiTouchTester
package:com.android.contacts
package:com.android.inputmethod.latin
package:com.android.phone
```

Figure 205: Uninstall user app

- The `uninstall` command uninstalls the app from the Android system.
- Delete the apk file for the app by using these commands:

```
> adb shell
# cd /system/app/
# ls
# rm Browser.apk
```

Use ADB command to uninstall default APP

Use `adb` command to uninstall an Android app: for example *Email.apk*. Follow these commands to uninstall a default app.

```
> adb shell
```

```
$ su  
su
```

```
# cd /system/app  
cd /system/app
```

```
# rm Email.apk
```

```
C:\Users\admin>adb shell  
shell@sabresd_6dq:/ $ su  
su  
root@sabresd_6dq:/ # cd /system/app  
cd /system/app  
root@sabresd_6dq:/system/app # rm Email.apk_
```

Figure 206: Uninstall default app

Use ADB command to uninstall default APP

Use `adb` command to transport files between the industrial PC and Windows 7 PC.

- **Transfer file from the industrial PC to Windows 7 PC using `adb pull` command.**

```
> adb pull <pathTo_file_on_board> <pathTo_store_file_on_PC>
```

- **Transfer file from the Windows 7 PC to the industrial PC using `adb push` command.**

```
> adb push <pathTo_file_on_PC> <pathTo_store_file_on_board>
```

For example, copy `<ADT>\sdk\platform-tools\chipsee.txt` from Windows PC to IPC:

```
> adb push chipsee.txt /chipsee.txt
```

Copy `/testFile.txt` from IPC to Windows PC:

```
> adb pull /testFile.txt testFile.txt
```


Adb connect via internet

1. The Ethernet port on the industrial PC and the host machine (Windows 7 PC) should connect to the network. Check Ethernet configuration for the industrial PC using the command below.

```
# netcfg
lo      UP          127.0.0.1/8    0x00000049 00:00:00:00:00:00
can0    DOWN       0.0.0.0/0     0x00000080 00:00:00:00:00:00
eth0    UP          192.168.6.176/24 0x00001043 1e:ed:19:27:1a:b3
```

2. If the industrial PC's Ethernet is not configured, configure the Ethernet using the `ifconfig / netcfg` command as shown below.

```
# netcfg eth0 dhcp
```

3. Configure the ADB Daemon to use an Ethernet connection using the `setprop` command, as shown below.

```
# setprop service.adb.tcp.port 5555
```

4. If the network is configured successfully using the steps above, then Restart service `adbd` on the Windows 7 PC.

```
# stop adbd
# start adbd
```

5. On the host machine (Windows 7 PC) use the following commands to establish the `adb` connection.

```
$ adb kill-server
$ adb start-server
$ adb connect :5555
```

6. Verify the device connectivity, by executing the following commands. If connected, find the device name listed as `IPADDRESS:PORT`.

```
$ adb devices
List of devices attached
192.168.6.176:5555    device
```

7. An example of using the `adb` command to install software for Android. Make sure the `"".apk` file is at the current folder, and export the adb path.**

- Use the argument `-s` to assign the device to use over the internet.

```
$ adb -s 192.168.1.117:5555 install "**".apk
```

Android App Development

In this section, we will introduce the development of an Android app with Android Studio on Windows. We assume that the USB is OTG model and the driver is already installed. (See [Adb connect via USB OTG](#))

Example — Develop a HelloWorld Program

1. Start a new Android Studio project

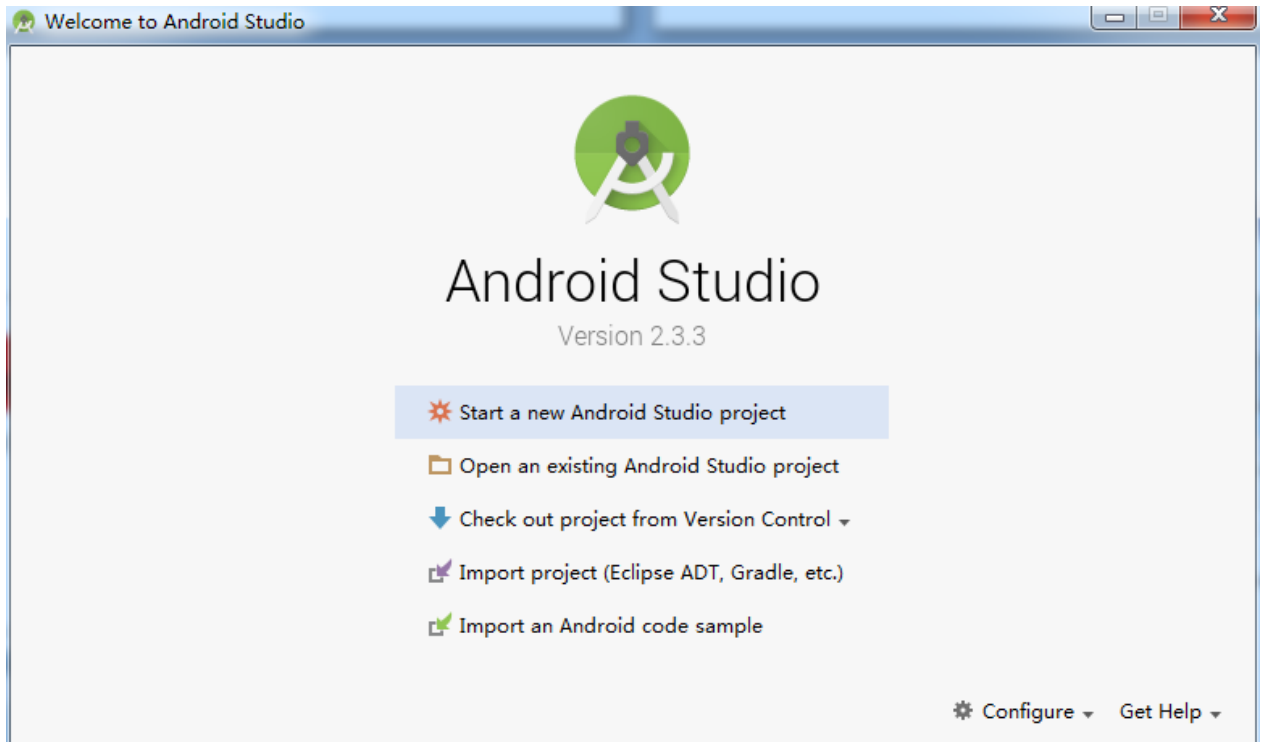


Figure 207: New Project

2. Configure your new project

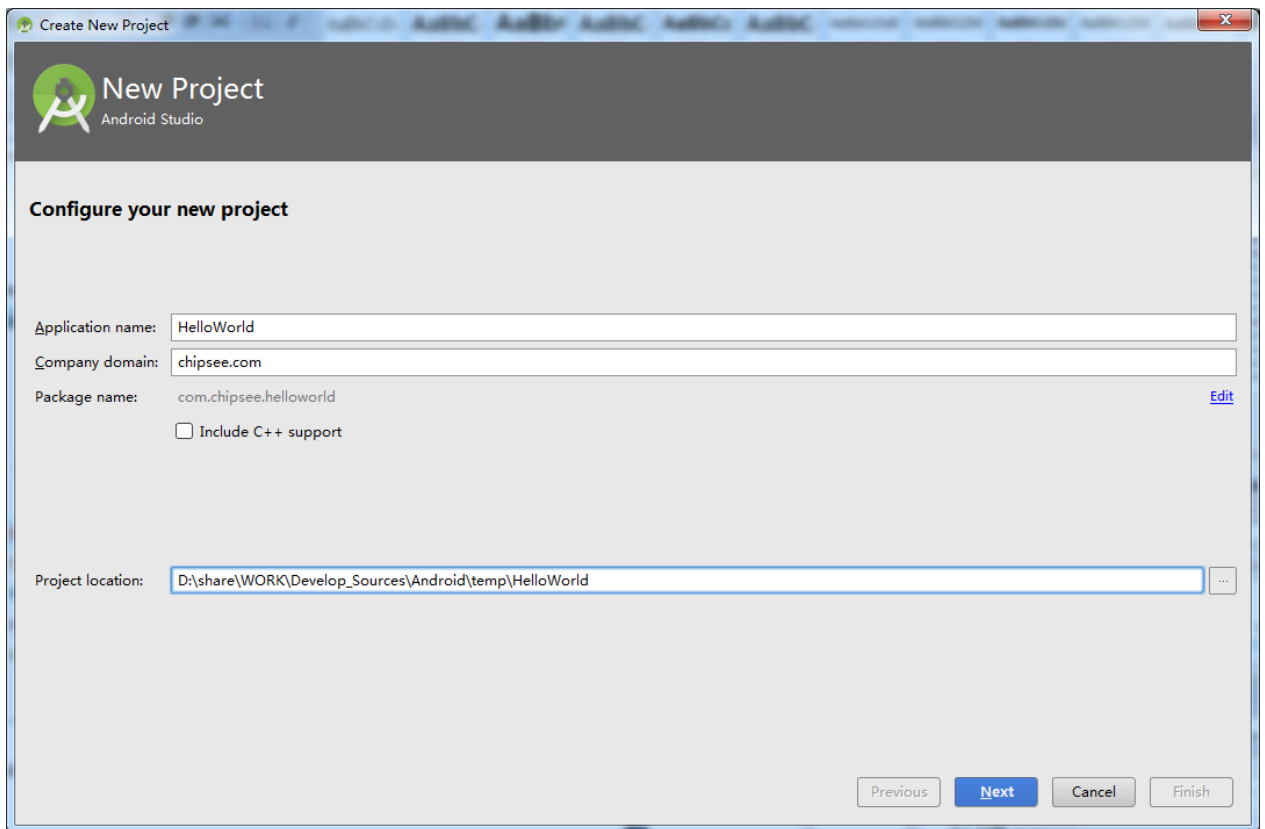


Figure 208: Project Configuration

3. Select the form factors your application will run on

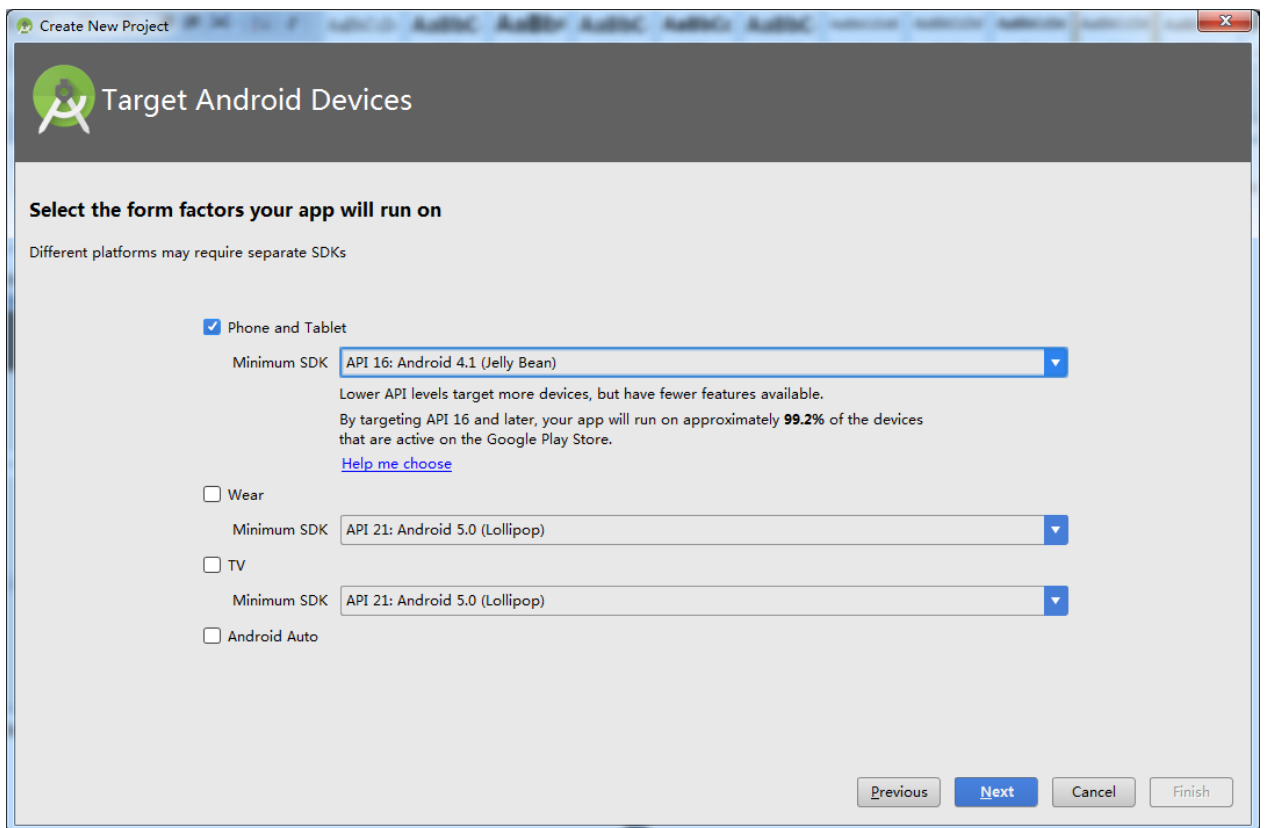


Figure 209: App form factor

4. Select one Empty Activity

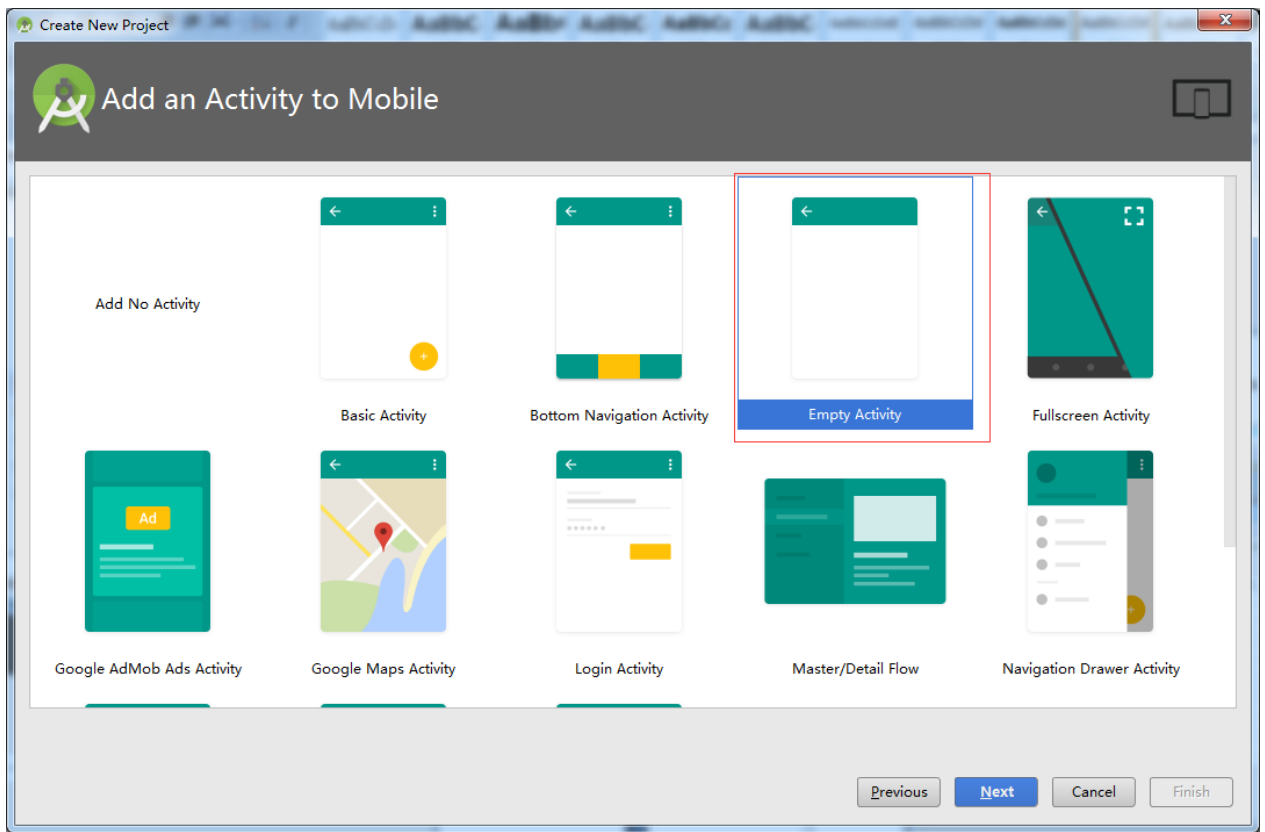


Figure 210: Add Activity

5. Customize the Activity

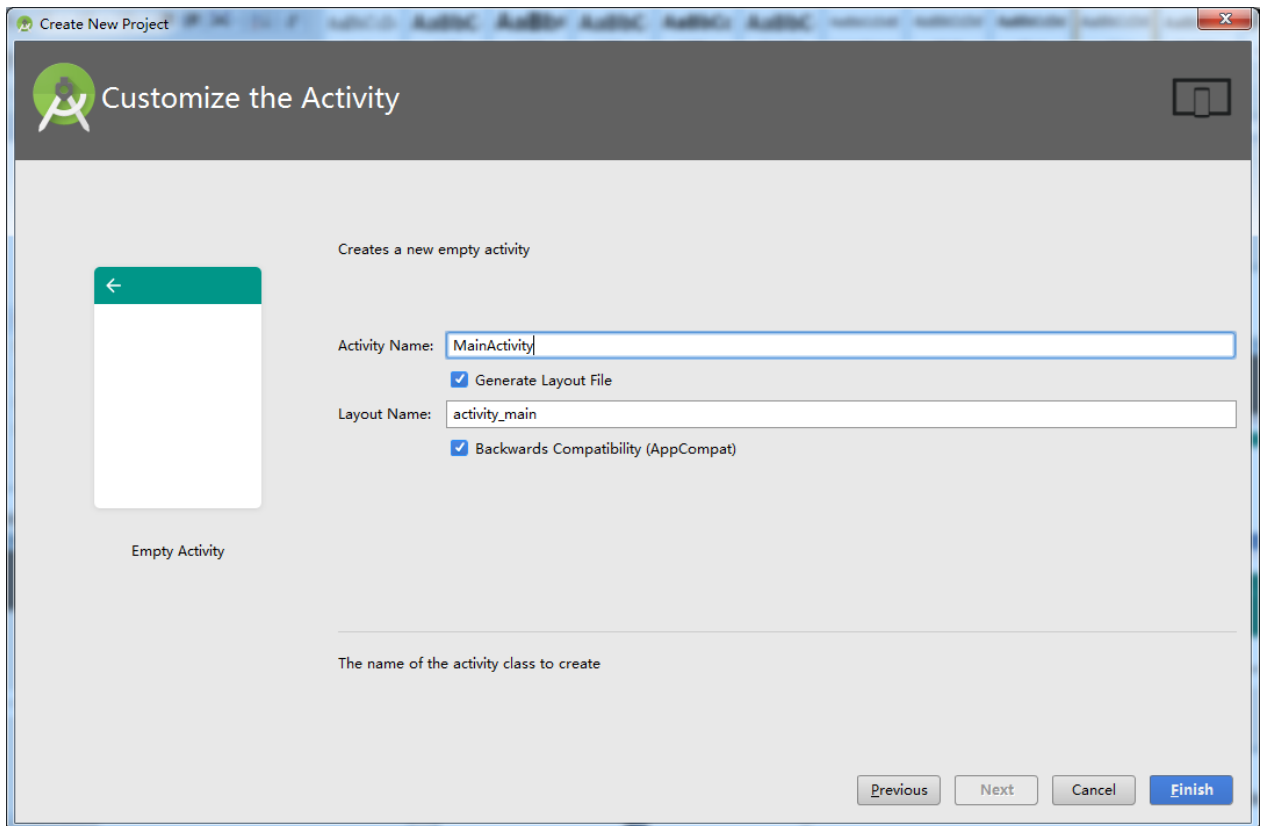


Figure 211: Customize Activity

6. Develop the App

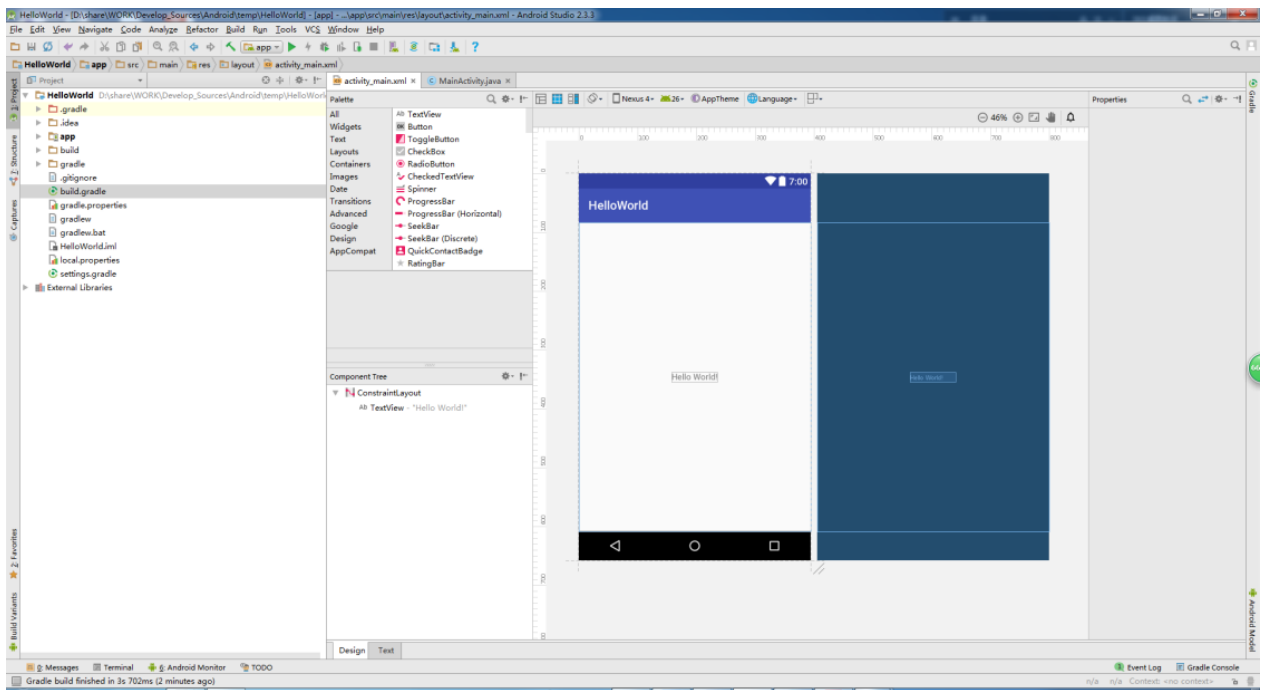


Figure 212: App Development Interface

7. Run app on target IPC

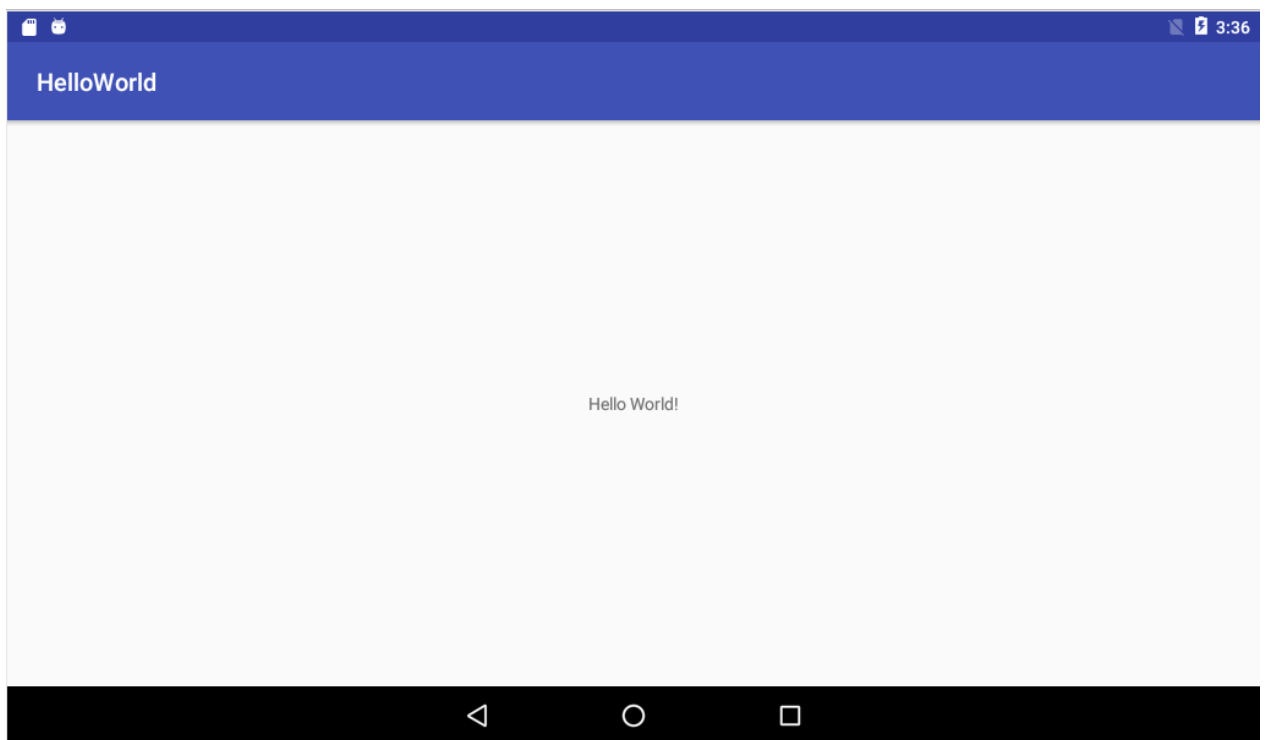


Figure 213: HelloWorld Program

Note

If the USB is not configured as an OTG model, you can copy and install the file `HelloWorld.apk` from the project folder `HelloWorld/bin/`, or install the `HelloWorld.apk` via the internet (See [Adb connect via internet](#)).

For more resources about Android development, visit these links:

<https://developer.android.com/guide/index.html> <https://developer.android.com/develop/index.html> <http://developer.android.com/support.html> <http://blog.apptopia.com/android-development-forums/> <http://androidforums.com/application-development/>

Disclaimer

This document is provided strictly for informational purposes. Its contents are subject to change without notice. Chipsee assumes no responsibility for any errors that may occur in this document. Furthermore, Chipsee reserves the right to alter the hardware, software, and/or specifications set forth herein at any time without prior notice and undertakes no obligation to update the information contained in this document.

While every effort has been made to ensure the accuracy of the information contained herein, this document is not guaranteed to be error-free. Further, it does not offer any warranties or conditions, whether expressed orally or implied in law, including implied warranties and conditions of merchantability or fitness for a particular purpose. We specifically disclaim any liability with respect to this document, and no contractual obligations are formed either directly or indirectly by this document.

Despite our best efforts to maintain the accuracy of the information in this document, we assume no responsibility for errors or omissions, nor for damages resulting from the use of the information herein. Please note that Chipsee products are not authorized for use as critical components in life support devices or systems.

Technical Support

If you encounter any difficulties or have questions related to this document, we encourage you to refer to our other documentation for potential solutions. If you cannot find the solution you're looking for, feel free to contact us. Please email Chipsee Technical Support at support@chipsee.com, providing all relevant information. We value your queries and suggestions and are committed to providing you with the assistance you require.