



We provide innovator companies with custom industrial solutions.



VERSATILE ARM-NXP-BASED INDUSTRIAL APPLICATIONS

Chipsee is an engineering company dedicated to agile research and development of industrial applications. Its ARM-NXP product line and customised solutions lead the way to more efficient industry development, with its performance suitable for 90% of industrial applications.

Chipsee's ARM-NXP Solutions and Products

Our Industrial Panels and Embedded PCs product lines provide industry innovators with sturdy and durable solutions for their large and small-scale projects.

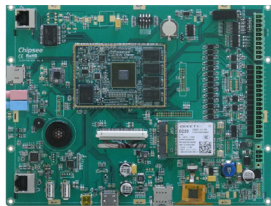
EMBEDDED PC

Chipsee's ARM-NXP-based embedded PCs come without the enclosure. The ARM-NXP PCs are based on the Cortex A9 CPU, providing great computing power for more demanding applications. This product line offers three display sizes: 7", 9.7", and 10.1".



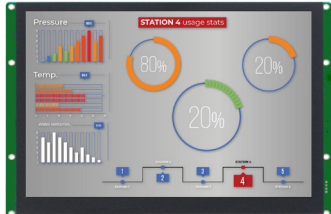
EPC-A9-070-C

- 7.0" IPS display
- Multi-Point Capacitive Touch
- Multiple GPIO and Serial Ports



EPC-A9-097-C

- 9.7" IPS display
- Multi-Point Capacitive Touch
- Multiple GPIO and Serial Ports



EPC-A9-101-C

- 10.1" IPS display
- Multi-Point Capacitive Touch
- Multiple GPIO and Serial Ports

PANEL PC

We offer Industrial Panel PCs for intensive industrial applications that require a human-machine interface. The products of this line are based on the Cortex A9 CPU, which can easily match 90% of industrial usage. They feature higher-resolution displays with better video performance in a size range from 7"-21.5".

PPC-A9-070-C



- 7.0" IPS display
- Multi-Point Capacitive Touch
- Multiple GPIO and Serial Ports
- Metal enclosure

PPC-A9-097-C



- 9.7" IPS display
- Multi-Point Capacitive Touch
- Multiple GPIO and Serial Ports
- Metal enclosure

PPC-A9-101-C



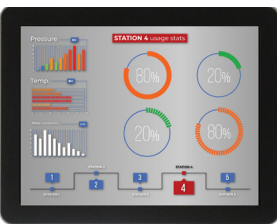
- 10.1" IPS display
- Multi-Point Capacitive Touch
- Multiple GPIO and Serial Ports
- Metal Enclosure

PPC-A9-121-C



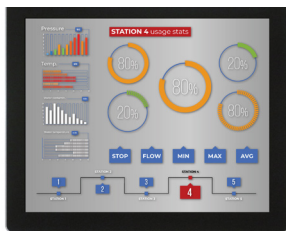
- 12.1" IPS display
- Multi-Point Capacitive Touch
- Multiple GPIO and Serial Ports
- Metal Enclosure

PPC-A9-150-C



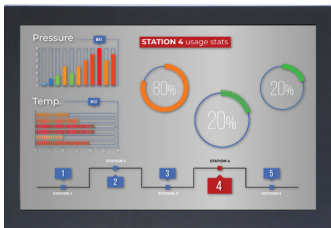
- 15.0" IPS display
- Multi-Point Capacitive Touch
- Multiple GPIO and Serial Ports
- Metal Enclosure

PPC-A9-170-C



- 17.0" IPS display
- Multi-Point Capacitive Touch
- Multiple GPIO and Serial Ports
- Metal Enclosure

PPC-A9-190-C



- 19.0" IPS display
- Multi-Point Capacitive Touch
- Multiple GPIO and Serial Ports
- Metal Enclosure

PPC-A9-215-C



- 21.5" IPS display
- Multi-Point Capacitive Touch
- Multiple GPIO and Serial Ports
- Metal Enclosure

	Display size (Inch)	Resolution (px)	Brightness (NIT)	Cap. Touch Screen	microSD slot	RAM (GB DDR3)	Flash (GB)	WiFi/BT	Audio Connector	GB Ethernet	USB 2.0 Host	USB OTG	HDMI	GPIO (IN)	GPIO (OUT)	RS485	RS232	CAN	4G/LTE	PoE	Power Input (VDC)	Power Consumption (W)	Working Temperature (C°)	Dimensions (mm)
EPC-A9-070-C	7.0	1024*600	500	✓	✓	2	8	✓	✓	✓	3	1	✓	4	4	2	2	✓			6~36	6	-20~70	190*107.8*27.7
PPC-A9-070-C	7.0	1024*600	500	✓	✓	2	8	✓	✓	✓	3	1	✓	4	4	2	2	✓			6~36	6	-20~70	206*135*30.1
EPC-A9-097-C	9.7	1024*768	350	✓	✓	2	8	✓	✓	✓	2	1	✓	4	4	3	2	✓	*		12~36	7	-20~70	226*172*26
PPC-A9-097-C	9.7	1024*768	350	✓	✓	2	8	✓	✓	✓	2	1	✓	4	4	3	2	✓	*		12~36	7	-20~70	256*207*29
EPC-A9-101-C	10.1	1280*800	250	✓	✓	2	8	✓	✓	✓	2	1	✓	4	4	3	2	✓	*	✓	12~36	7	-20~70	245*155*11
PPC-A9-101-C	10.1	1280*800	250	✓	✓	2	8	✓	✓	✓	2	1	✓	4	4	3	2	✓	*	✓	12~36	7	-20~70	280*185.5*27.5
PPC-A9-121-C	12.1	1024*768	250	✓	✓	2	8	✓	✓	✓	4	1	✓	4	4	2	2	✓	*		15~36	10	-20~70	307*245*41
PPC-A9-150-C	15.0	1024*768	250	✓	✓	2	8	✓	✓	✓	4	1	✓	4	4	2	2	✓	*		15~36	15	-20~70	359*283*46
PPC-A9-170-C	17.0	1280*1024	250	✓	✓	2	8	✓	✓	✓	4	1	✓	4	4	2	2	✓	*		15~36	20	-20~70	392*330*62
PPC-A9-190-C	19.0	1440*900	250	✓	✓	2	8	✓	✓	✓	4	1	✓	4	4	2	2	✓	*		15~36	22	-20~70	466*313*63
PPC-A9-215-C	21.5	1920*1080	250	✓	✓	2	8	✓	✓	✓	4	1	✓	4	4	2	2	✓	*		15~36	25	-20~70	530*322*45

* Optional



Let's get in **Touch!**

CHIPSEE CO. LIMITED
Xinyuan Science Park B406
97 Changping Road, Changping District
Beijing 102206, China

Headquarter: + 86 10-62105170
EMEA: +43 1 4170002
contact@chipsee.com
www.chipsee.com

